

**GENERAL NOTES:**

1. SKYLIGHT SHOWN ON THIS PRODUCT EVALUATION DOCUMENT (P.E.D.) HAS BEEN VERIFIED FOR COMPLIANCE IN ACCORDANCE WITH THE 2023 (8th EDITION) OF THE FLORIDA BUILDING CODE. THIS SKYLIGHT MAY BE INSTALLED AT HIGH VELOCITY HURRICANE ZONES (HVHZ) AND OUT OF THEM (NHVHZ).

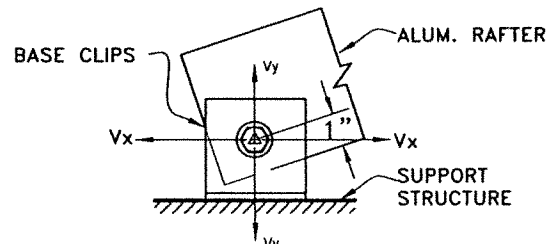
DESIGN LIVE & WIND LOADS SHALL BE DETERMINED AS PER SECTIONS 1620 (HVHZ) & 1609 (NHVHZ) OF THE ABOVE MENTIONED CODE, FOR A BASIC WIND SPEED AS REQUIRED BY THE JURISDICTION WHERE THIS PRODUCT TO BE INSTALLED FOR A DIRECTIONALITY FACTOR  $K_d=0.85$ , USING ASCE 7-22 AND SHALL NOT EXCEED THE MAXIMUM (A.S.D.) DESIGN PRESSURE RATINGS INDICATED ON NOTE 2 BELOW.  
 IN ORDER TO VERIFY THE ABOVE CONDITION, ULTIMATE DESIGN WIND LOADS DETERMINED PAR ASCE 7-22 SHALL BE FIRST REDUCED TO A.S.D. DESIGN WIND LOADS BY MULTIPLYING THEM BY 0.6 IN ORDER TO COMPARE THESE W/ MAX. (A.S.D.) DESIGN PRESSURE RATINGS INDICATED ON NOTE 2 BELOW.

IN ORDER TO VERIFY THAT ANCHORS ON THIS P.E.D. ARE NOT OVERSTRESSED UNDER DESIGN PRESSURE RATINGS INDICATED ON NOTE 2 BELOW, FOR EVERY SINGLE APPLICATION OF THIS SKYLIGHT SYSTEM, A 33% INCREASE IN ALLOWABLE STRESS FOR WIND LOADS SHALL NOT BE USED IN THEIR ANALYSIS.

1A. SHOP DRAWINGS AND STRUCTURAL CALCULATIONS SHALL BE SUBMITTED FOR EVERY PERMIT. CONFIGURATION OF SKYLIGHT(S) MAY VARY FROM THOSE SHOWN ON THIS P.E.D. AND INCLUDE BUT ARE NOT LIMITED TO GABLE, HIP, PYRAMID & MONOSLOPE ROOFS WITH DIFFERENT SKYLIGHT WIDTH, LENGTH AND RISE W/ CORRESPONDING CROSS SECTION RAFTERS & PURLINS, BUT PRESSURE RATING AS WELL AS MAX. GLASS PANEL SIZE AND AREA SHALL NOT EXCEED THOSE INDICATED ON THIS DRAWING (SEE NOTES 2 AND 11 RESPECTIVELY) PROVIDING THE ABOVE MENTIONED CONDITIONS ARE COMPLIED WITH. DESIGN SHALL BE PERFORMED BY A FLORIDA P.E. AND REVIEWED BY THE STRUCTURAL PLANS EXAMINER OF THE CORRESPONDING BUILDING DEPARTMENT ON A JOB SPECIFIC BASIS. (SEE NOTE 18). BRACKET, SILL, FLASHING, ANCHORS AND CONNECTION BOLTS MAY VARY FROM THOSE INDICATED ON THIS P.E.D. BUT NEVER BE LESS THAN INDICATED ON THIS P.E.D.

2. A.S.D. DESIGN PRESSURE RATING AT ROOF IS: +75.0 psf (WINDWARD SIDE), -100.0psf (LEEWARD SIDE).  
 A.S.D. DESIGN PRESSURE RATING AT WALL IS: +75.0, -100.0 psf.  
 A.S.D. DESIGN PRESSURE RATING AS PER SECTION 1626 AND 1609.1.2 OF THE FLORIDA BUILDING CODE, PER PROTOCOLS TAS 201, 202, 203, PER AMERICAN TESTING LABORATORY OF SOUTH FLORIDA REPORT # 0513.01-21. WATER AND AIR INFILTRATION TESTING AS PER PROTOCOL TAS 202, QUALIFYING ASTM E 331 AND ASTM E 283 RESPECTIVELY. GLASS VERIFIED PER ASTM E-1300, PER SECTION 2404.1 OF THE FLORIDA BUILDING CODE.

3. STRUCTURAL ADEQUACY OF SUPPORTING STRUCTURAL MEMBERS IS NOT PART OF THIS P.E.D. STRUCTURAL DESIGN OF THE STRUCTURE THAT WILL PROVIDE SUPPORT TO THIS SKYLIGHT SHALL BE PERFORMED BY THE STRUCTURAL ENGINEER OF RECORD FOR THE PROJECT. STRUCTURAL DESIGN SHALL INCLUDE AND TAKE INTO CONSIDERATION THE ACTUAL  $V_x$  AND  $V_y$  LOADS TRANSFERRED FROM THIS SKYLIGHT TO THE SUPPORT STRUCTURE, BASED ON DEAD, LIVE & WIND LOADS AND USING THE LOAD COMBINATIONS AS PER A.S.C.E. 7-22 STANDARD. ADEQUACY OF SUPPORTING STRUCTURAL MEMBERS SHALL BE REVIEWED BY THE STRUCTURAL PLANS EXAMINER OF THE CORRESPONDING BUILDING DEPARTMENT ON A JOB SPECIFIC BASIS.



- 4. ALL ALUMINUM EXTRUSIONS SHALL BE ALUMINUM ASSOCIATION 6063-T6 ALLOY AND TEMPER.
- 5. ALL ALUMINUM SHEET SHALL BE ALUMINUM ASSOCIATION 5005-H14 ALLOY AND HARDNESS (FLASHING). ALL SHEET ALUMINUM TO BE 5005-H14 ALLOY (STRUCTURAL, U.N.O.).
- 6. ALL SELF TAPPING SCREWS OR MACHINE SCREWS TO BE STAINLESS STEEL AISI SERIES 304 OR 316 I.T.W. BUILDEX TEKS & SHALL COMPLY W/ FLORIDA BUILDING CODE SECTION 2411.3.3.4.
- 7. ALL ALUMINUM POP RIVETS TO BE 5052 ALUMINUM ALLOY WITH ALUMINUM MANDREL.
- 8. BOLTS TO BE STAINLESS STEEL AISI SERIES 304 OR 316 WITH 50 ksi (Min.) YIELD STRENGTH AND 90 ksi TENSILE STRENGTH, PER ASTM B-593 AND B-594.
- 9. GLAZING SYSTEM SHALL COMPRISE OF THE FOLLOWING COMPONENTS:

- 9.1. ALL GASKETS TO BE MADE OF EXTRUDED SILICONE, WITH DUROMETER HARDNESS=60±5, ULTIMATE TENSILE=1200 psi MIN. AND ELONGATION=250% MIN. BY SANTOPRENE.
- 9.2. ALL BACKER RODS TO BE OPEN CELL (OCFOAM) POLYURETHANE BY NOMACO WITH THE FOLLOWING PHYSICAL PROPERTIES:

POLYURETHANE QUALITY	ASTM 1564
NON-COMPRESSED DENSITY	1.7 lbs/cu. ft.
COMPRESSION DEFLECTION	1.4 psi
TENSILE STRENGTH	25 psi MIN.
TEMPERATURE RANGE	-60° TO 500°F.

9.3. SETTINGS BLOCKS:

**NEOPRENE**

TEMPERATURE RANGE -30 TO +200° F  
 HARDNESS SHORE A: 80 ± 5  
 TENSILE STRENGTH: 750 psi  
 ELONGATION: 250%

- 9.4. STRUCTURAL SILICONE FOR GLAZING AT RAFTERS & PURLINS TO BE DOW CORNING 995 SILICONE STRUCTURAL SEALANT AND DOW CORNIL 795 SILICONE FOR METAL TO METAL.
- 9.5. ALL BACKER ROD JOINTS SEALANT TO BE DOW CORNING 995 SILICONE PERIMETER SEALANT.
- 9.6. ALL GLAZING BLOCKS TO BE NEOPRENE MATERIAL WITH A DUROMETER HARNNESS=90.
- 10. ALL FLASHING TO BE LAPPED 3" AND SET ON A BED OF SILICONE SEALANT.
- 11. GLASS TO BE 9/16" THICK IMPACT RESISTANT LAMINATED GLASS OR 1 5/16" THICK IMPACT RESISTANT INSULATED GLASS. Max. GLASS PANEL SIZE IS 48 1/2" x 120 5/8". (MAX. GLASS AREA = 41.0 FT²) @ GABLES OR MONOSLOPES & 54 5/8" WIDE X VARIES (MAX. GLASS AREA = 35 FT²) AT HIP OR PYRAMID. SEE SHEETS 2A & 8A.
- 12. ALL WELDING TO CONFORM TO THE AMERICAN WELDING SOCIETY A.W.S. D1.2 REGULATIONS, USE CERTIFIED WELDERS. USE ER-5356 FILLERS.
- 13. ALUMINUM MEMBERS IN CONTACT WITH CONCRETE SHALL BE PROTECTED ACCORDINGLY WITH SECTION III-6 OF THE 2020 ALUMINUM DESIGN MANUAL.
- 14. ALUMINUM MEMBERS IN CONTACT WITH STEEL SHALL BE PROTECTED ACCORDINGLY WITH SECTION III-6 OF THE 2020 ALUMINUM DESIGN MANUAL.
- 15. PAINT, FINISH AND COLOR TO BE SELECTED BY ARCHITECT OF RECORD FOR THE JOB IN COORDINATION W/ SKYLIGHT CONCEPTS, INC. AND SHALL COMPLY WITH AAMA 1600 SPECIFICATION.
- 16. IT SHALL BE THE RESPONSIBILITY OF THE CONTRACTOR TO VERIFY THE SOUNDNESS OF THE STRUCTURE WHERE THE SKYLIGHT IS TO BE ATTACHED TO INSURE PROPER ANCHORAGE. SEE NOTE 3 ABOVE. CONTRACTOR IS TO SEAL/CAULK ALL SKYLIGHT COMPONENT EDGES AS INDICATED ON THIS DRAWING TO PREVENT WIND/RAIN INTRUSION.
- 17. SKYLIGHT INSTALLATION SHALL COMPLY WITH SPECS INDICATED IN THIS DRAWING PLUS ANY BUILDING AND ZONING REGULATIONS PROVIDED BY THE JURISDICTION WHERE PERMIT IS APPLIED TO.
- 18. (a) THE PRODUCT EVALUATION DOCUMENT (P.E.D.) PREPARED BY THIS ENGINEER IS GENERIC AND DOES NOT PROVIDE INFORMATION FOR A SITE SPECIFIC PROJECT.  
 (b) CONTRACTOR TO BE RESPONSIBLE FOR THE SELECTION, PURCHASE AND INSTALLATION INCLUDING LIFE SAFETY OF THIS PRODUCT BASED ON THIS PRODUCT EVALUATION DOCUMENT PROVIDED HE/SHE DOES NOT DEVIATE FROM THE CONDITIONS DETAILED ON THIS DOCUMENT. CONSTRUCTION SAFETY AT SITE IS THE CONTRACTOR'S RESPONSIBILITY.  
 (c) THIS PRODUCT EVALUATION DOCUMENT WILL BE CONSIDERED INVALID IF MODIFIED.  
 (d) SITE SPECIFIC PROJECTS SHALL BE PREPARED BY A FLORIDA REGISTERED ENGINEER OR ARCHITECT WHICH WILL BECOME THE PROFESSIONAL OF RECORD (P.O.R.) FOR THE PROJECT AND WHO WILL BE RESPONSIBLE FOR THE PROPER USE OF THE P.E.D. PROFESSIONAL OF RECORD, ACTING AS DELEGATED ENGINEER TO THE P.E.D. ENGINEER, SHALL SUBMIT THIS LATTER THE SITE SPECIFIC DRAWINGS FOR REVIEW.  
 (e) ORIGINAL P.E.D. SHALL BEAR THE DATE AND ORIGINAL SEAL AND SIGNATURE OF THE PROFESSIONAL ENGINEER THAT PREPARED IT.
- 19. PRODUCT MANUFACTURER'S LABEL SHALL BE PLACED ON AN EXPOSED SURFACE OF SKYLIGHT IN ACCORDANCE WITH SECTION 2405.5 OF THE FLORIDA BUILDING CODE. ONE LABEL SHALL BE PLACED FOR EVERY OPENING.

**THIS DRAWING SHALL ONLY BE USED TO OBTAIN PERMITS IN THE STATE OF FLORIDA**

FLORIDA BUILDING CODE (HIGH & NON HIGH VELOCITY HURRICANE ZONE)

IMPACT RESISTANT SCI-H500 SKYLIGHT SYSTEM (L.M.I.)

SKYLIGHT CONCEPTS, INC.  
 9715 W. BROWARD BLVD #264  
 PLANTATION, FLORIDA 33324

Y.M. DRAWN BY: 7/14/2023 DATE: 23-097 DRAWING NO. SHEET 1 OF 14

TILECO INC.  
 TILE TESTING & ENGINEERING COMPANY  
 1530 N.W. 36th Street, Ft. Lauderdale, FL 33309  
 Phone: (754) 377-1530 Fax: (754) 377-1531  
 CA-0006719  
 WALTER A. TILLOT Jr. P.E.  
 FLORIDA Lic. # 44167

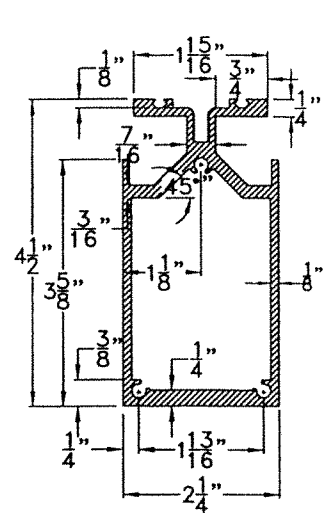
No. 44167

STATE OF FLORIDA

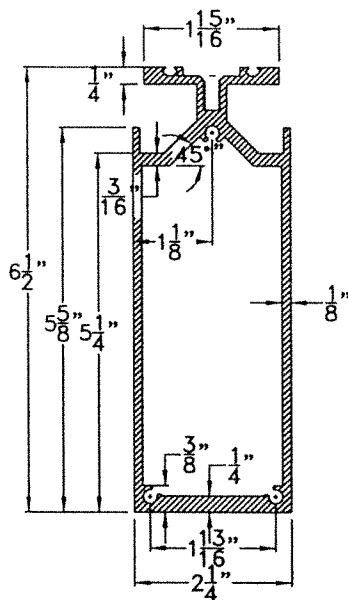
WALTER A. TILLOT Jr. P.E.

PROFESSIONAL ENGINEER

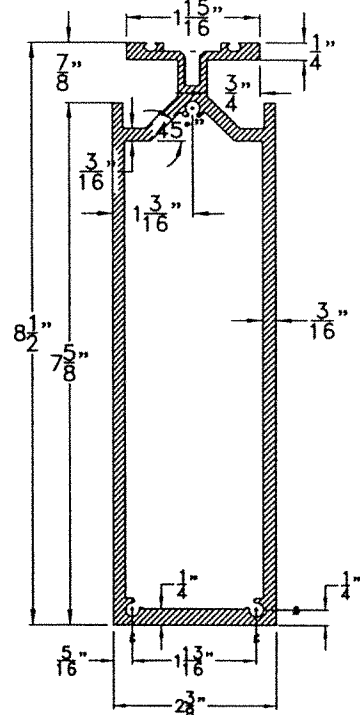
SEAL/SIGNATURE/DATE



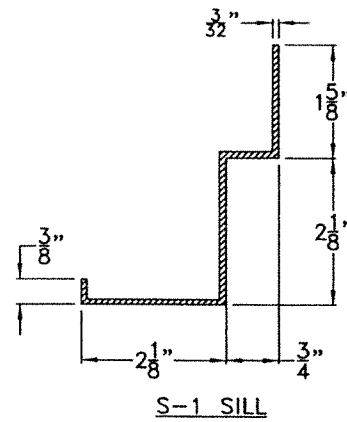
R-4 43775



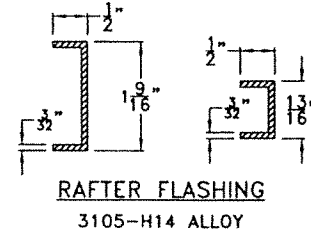
R-6 43774



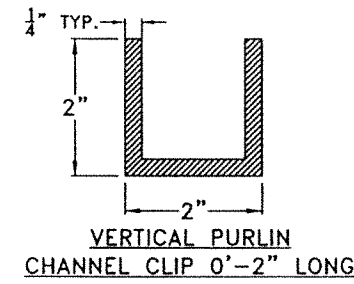
R-8 46263



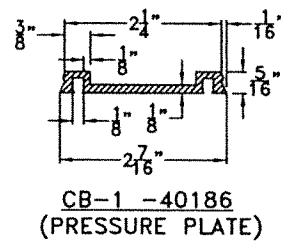
S-1 SILL



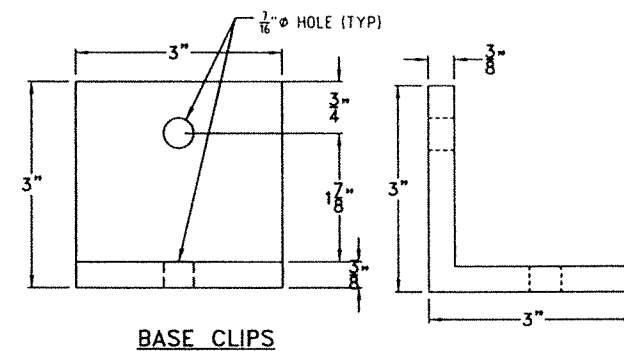
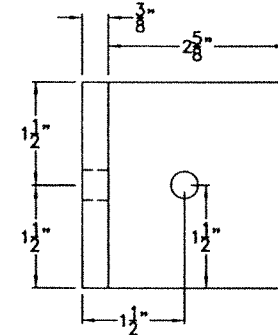
RAFTER FLASHING  
3105-H14 ALLOY



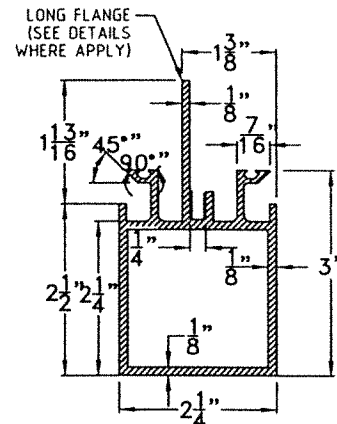
VERTICAL PURLIN  
CHANNEL CLIP 0'-2" LONG



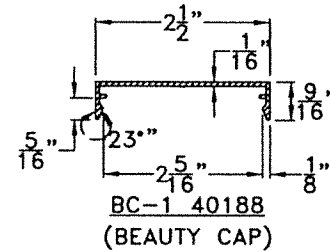
CB-1 -40186  
(PRESSURE PLATE)



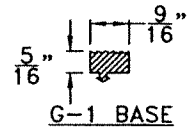
BASE CLIPS



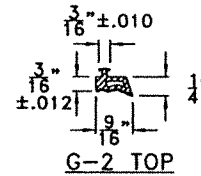
P-3 43728



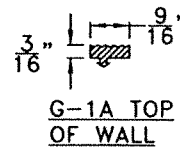
BC-1 40188  
(BEAUTY CAP)



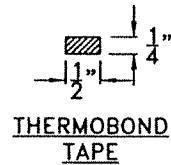
G-1 BASE



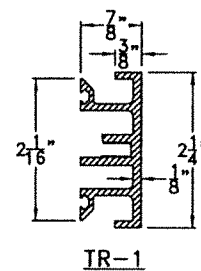
G-2 TOP



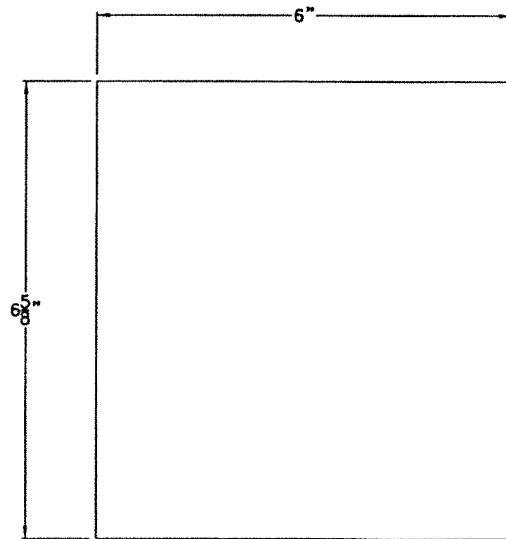
G-1A TOP  
OF WALL



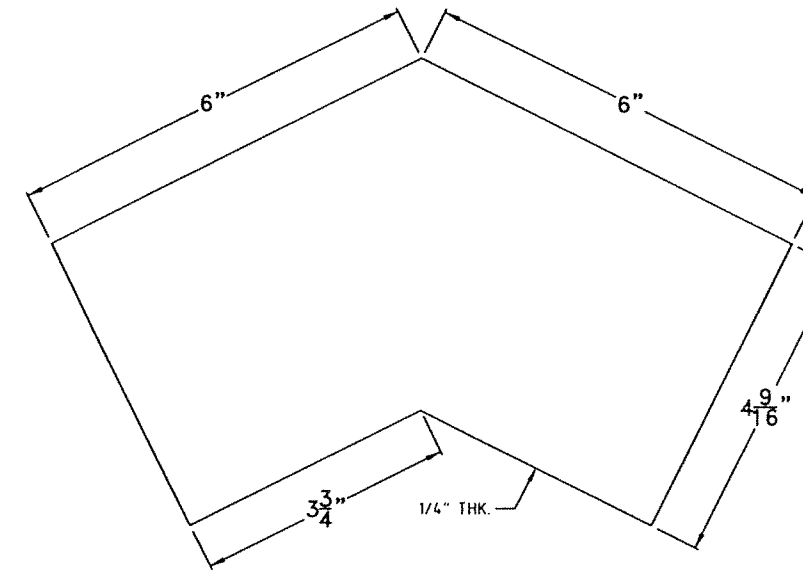
THERMOBOND  
TAPE



IR-1



GABLE RAFTER R-6 WALL PLATE



RIDGE CHEVRON FOR R-6 GABLE RAFTER

COMPONENTS FOR GABLE ROOF SKYLIGHTS  
(SEE SHEET 2A FOR GLASS & SEE GENERAL NOTE 1A/1))

SCALE: N.T.S.

FLORIDA BUILDING CODE (HIGH & NON HIGH VELOCITY HURRICANE ZONE)		Y.M.	7/14/2023
IMPACT RESISTANT SCI-H500 SKYLIGHT SYSTEM (L.M.I.)		DATE:	7/14/2023
SKYLIGHT CONCEPTS, INC.		DATE:	23-097
9715 W. BROWARD BLVD #264 PLANTATION, FLORIDA 33324		REVISION	DRAWING No.
REV. NO.	DESCRIPTION	DATE	
1	ADD 31-001	7/12/2023	1
2			

©2023 TILTECO, INC.

**TILTECO INC.**

TILIT TESTING & ENGINEERING COMPANY  
1335 N.W. 34th St., Ft. Lauderdale, FL 33314  
Phone: (305) 551-1331 Fax: (305) 551-1331

WALTER A. TILLIT JR., P.E.  
FLORIDA Lic. # 44167

No. 44167

STATE OF FLORIDA

WALTER A. TILLIT JR.

LICENSE

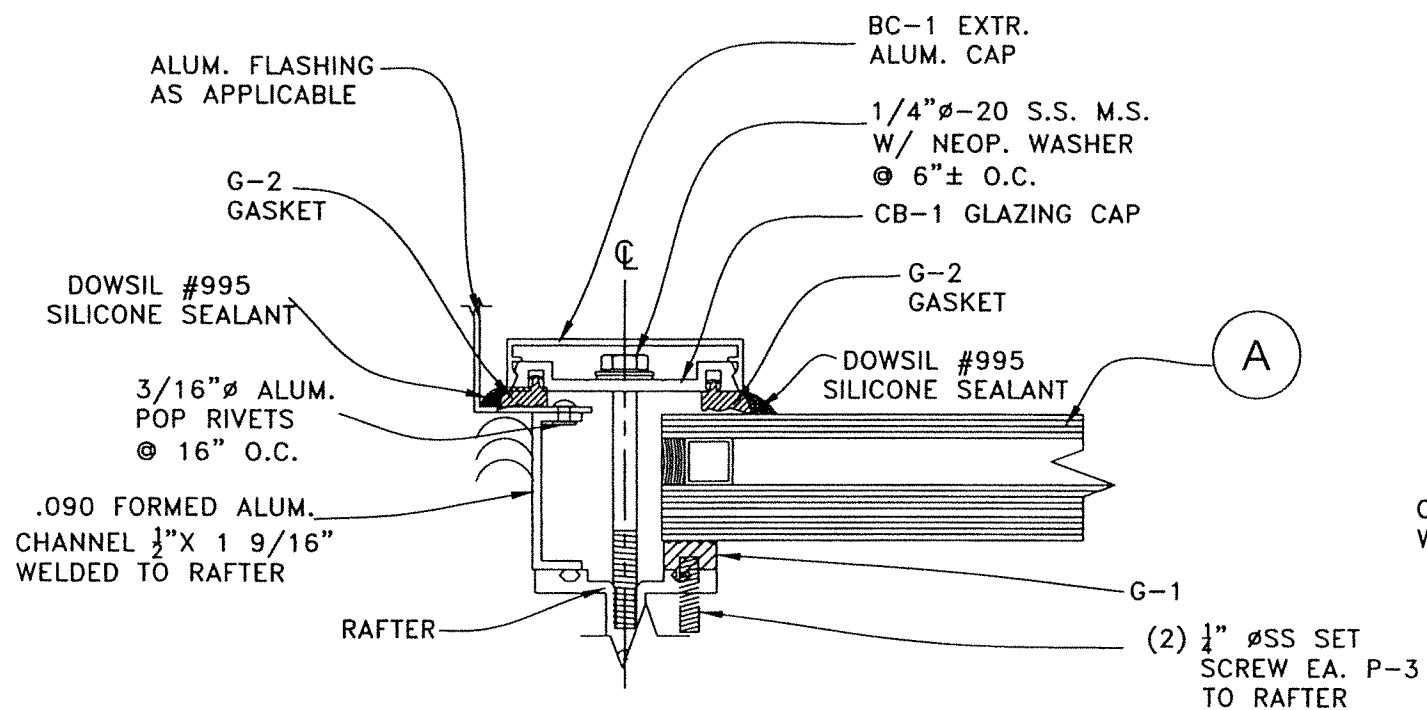
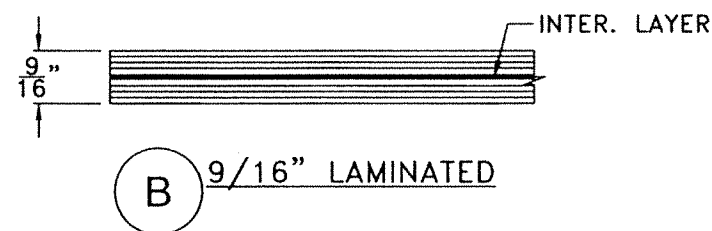
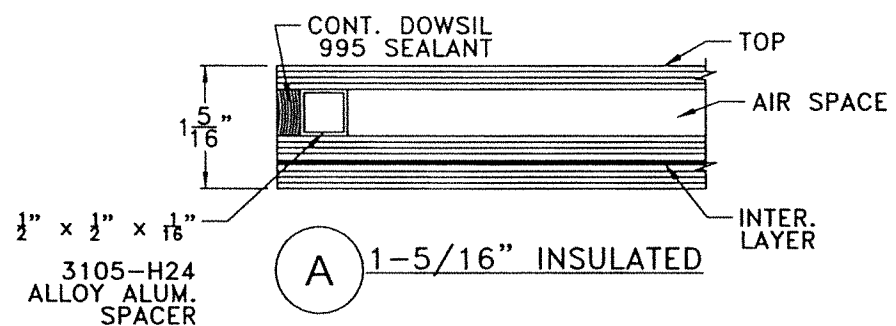
PROFESSIONAL ENGINEER

Signature: *[Handwritten Signature]* 7/14/2023

P.E. SEAL/SIGNATURE/DATE

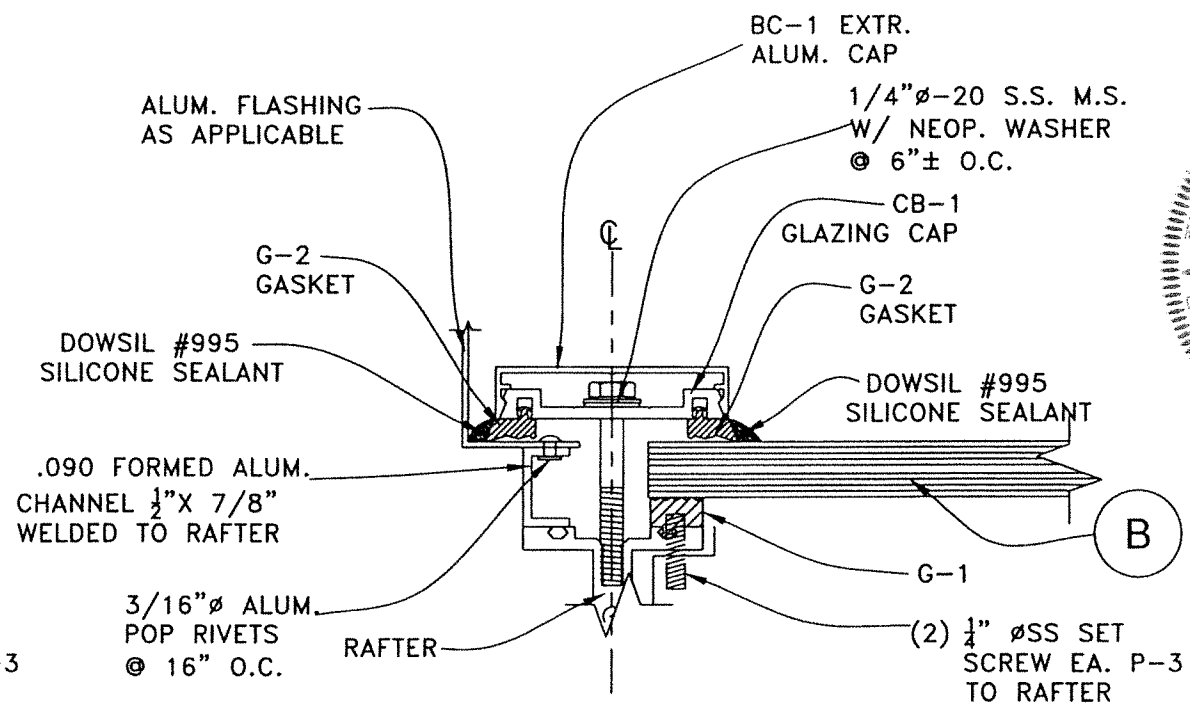
**GLAZING COMPONENTS FOR GABLE SKYLIGHTS**

SKYLIGHT	DESCRIPTION	MATERIAL
A	1 5/16" NOMINAL INSULATED GLASS W/ 1/4" TEMPERED AT TOP + 1/2" AIR SPACE + 1/4" CLEAR H.S. GLASS + 0.090" SGP INTERLAYER BY KURARAY AMERICA, INC. + 1/4" CLEAR H.S. + 1/2" x 1/2" x 1/16" ALUM. ALLOY SPACER	I.G. GLASS
B	9/16" NOMINAL LAMINATED GLASS W/ 1/4" CLEAR H.S. + 0.090" SGP BY KURARAY AMERICA, INC. + 1/4" CLEAR H.S.	L.G. GLASS



GLAZING DETAIL W/ 1 5/16" INSULATED GLASS **A**

SCALE: 1/2" = 0'-1"



GLAZING DETAIL W/ 9/16" LAMINATED GLASS **B**

SCALE: 1/2" = 0'-1"

FLORIDA BUILDING CODE (HIGH & NON HIGH VELOCITY HURRICANE ZONE)

IMPACT RESISTANT SCI-H500 SKYLIGHT SYSTEM (L.M.I.)

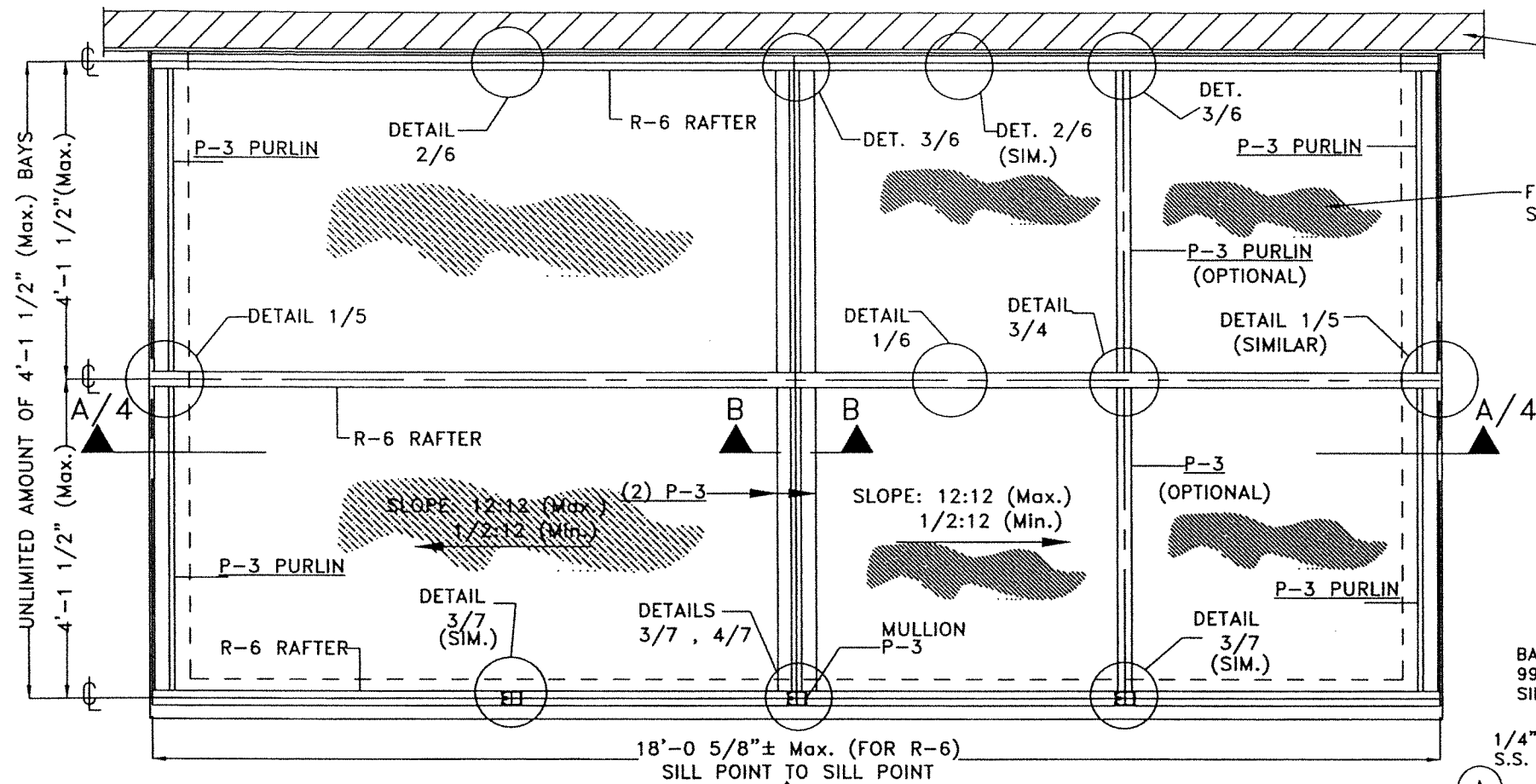
Y.M. DRAWN BY: 7/14/2023 DATE: 23-097 DRAWING No. SHEET 2A OF 14

SKYLIGHT CONCEPTS, INC.  
9715 W. BROWARD BLVD #264  
PLANTATION, FLORIDA 33324

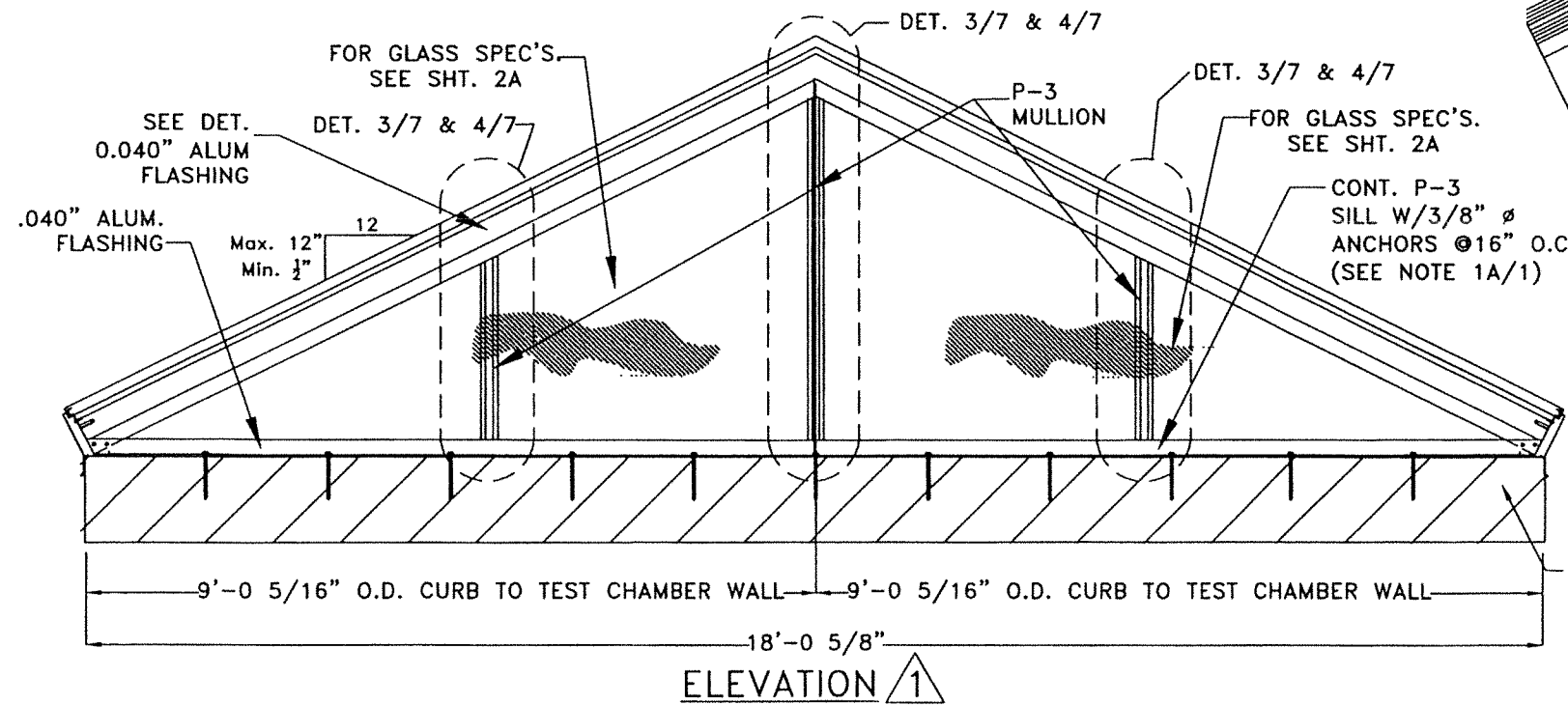
TILECO INC.  
TILLIT TESTING & ENGINEERING COMPANY  
4335 N.W. 34th St., Ft. Lauderdale, FL 33314  
Phone: (954) 341-1100 FAX: (954) 341-1501  
CA-0006719  
WALTER A. TILLIT JR., P.E.  
FLORIDA Lic. # 44167

WALTER A. TILLIT JR.  
LICENSE  
No. 44167  
STATE OF FLORIDA  
PROFESSIONAL ENGINEER  
P.E. SEAL/SIGNATURE/DATE

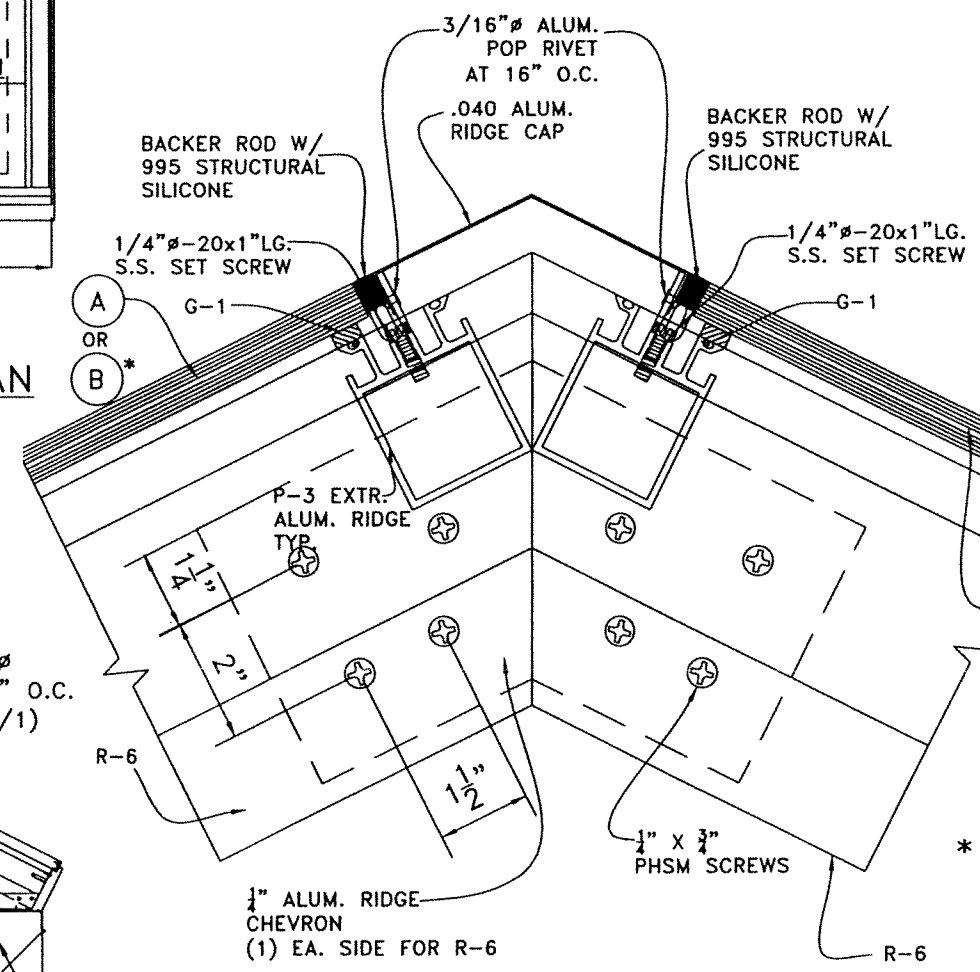
7/14/2023



**GENERIC GABLE OR MONOSLOPE (AS APPLICABLE) ROOF FRAMING PLAN**  
SCALE= N.T.S. (SEE NOTE 1A/1)



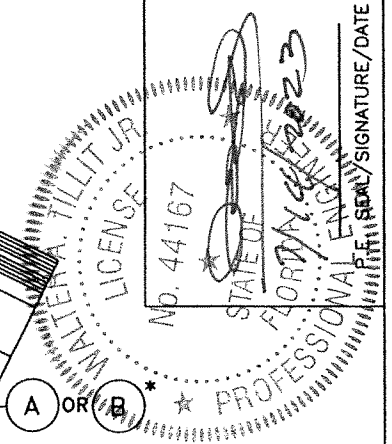
**ELEVATION 1**

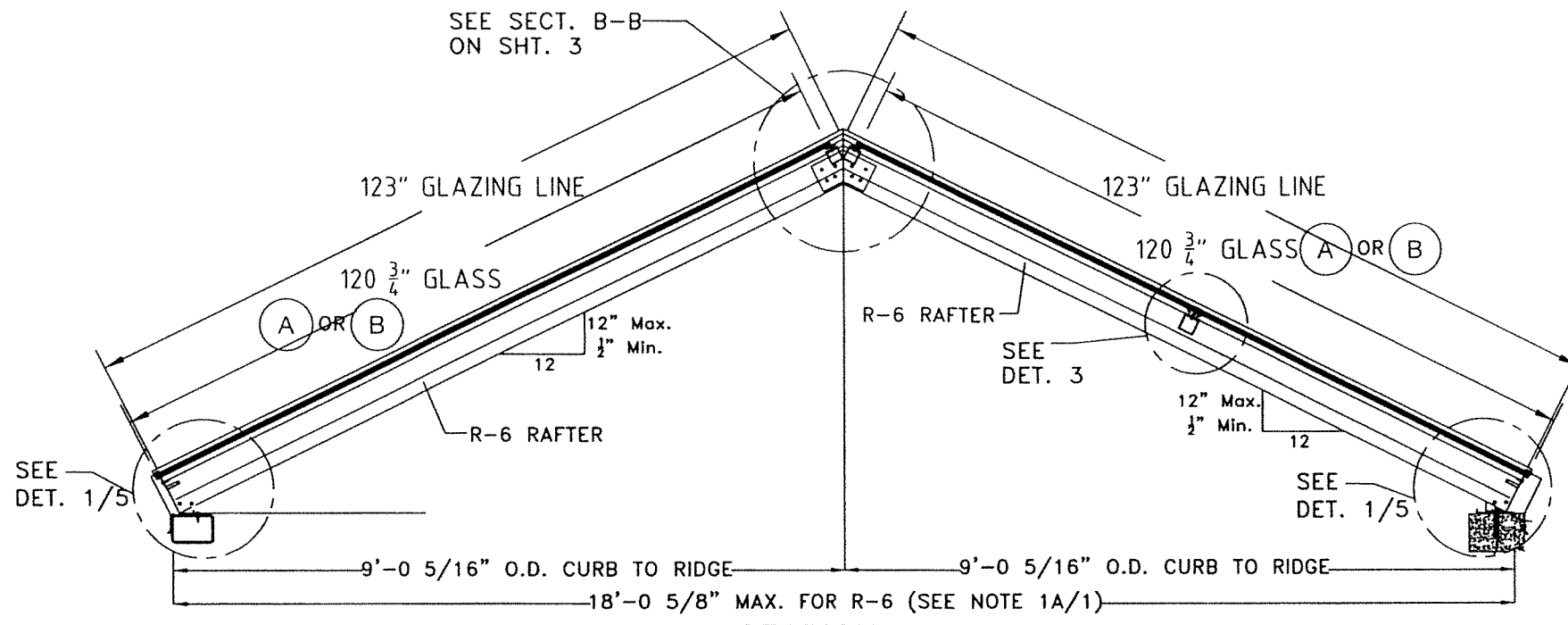


**SECTION B-B**  
SCALE: 1/2"=0'-1"

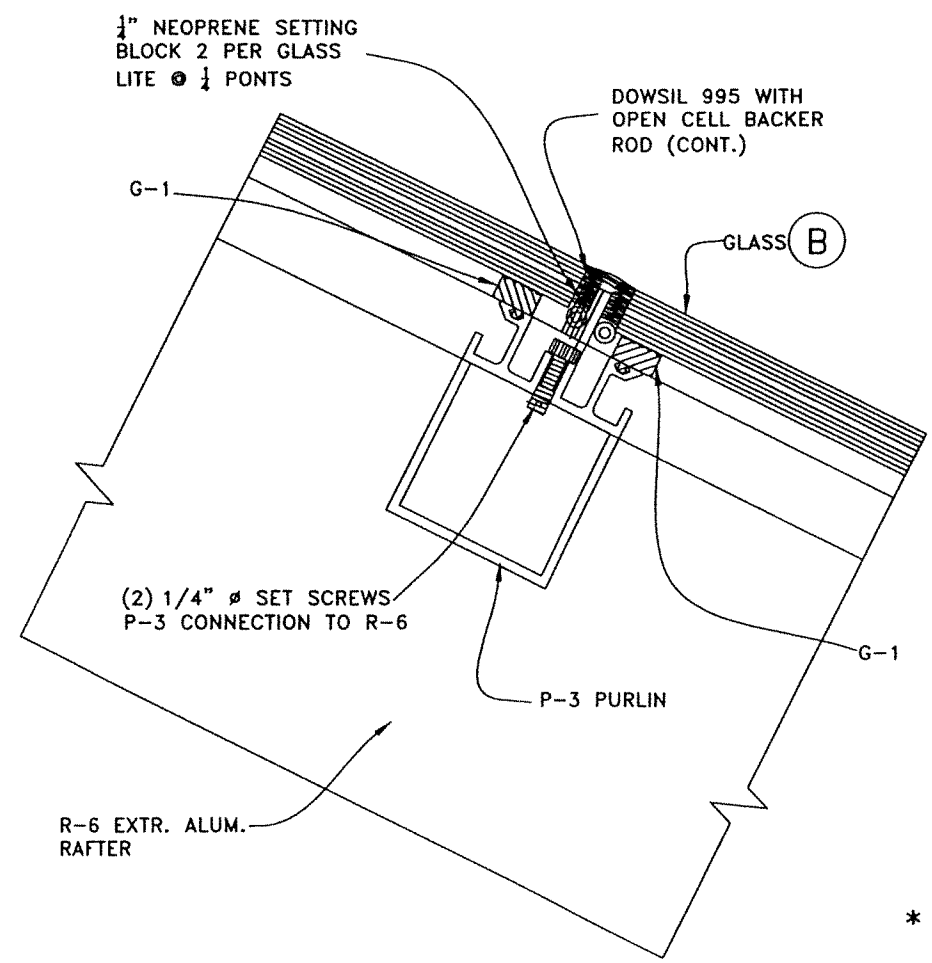
**\* NOTE:**  
SEE SHEET 2A FOR GLAZING DETAIL W/ GLASS (A)

FLORIDA BUILDING CODE (HIGH & NON HIGH VELOCITY HURRICANE ZONE)	
Y.M. DRAWN BY:	IMPACT RESISTANT SCI-H500 SKYLIGHT SYSTEM (L.M.I.)
DATE:	7/14/2023
Y.M. DATE:	23-097
Y.M. DRAWING NO.:	23-097
Y.M. SHEET NO.:	3 OF 14
<b>TILECO INC.</b> TILIT TESTING & ENGINEERING COMPANY 6330 N.W. 36th St., Ste. 200, Miami Gardens, FL 33154 Phone: 1 (305) 471-1100 Fax: 1 (305) 471-1101 WALTER A. TILLIT JR., P.E. FLORIDA LIC. # 44167	
<b>SKYLIGHT CONCEPTS, INC.</b> 9715 W. BROWARD BLVD. #264 PLANTATION, FLORIDA 33324	





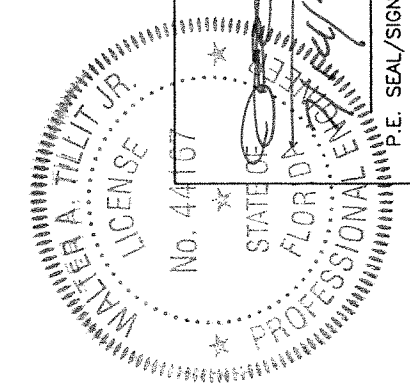
SECTION A-A  
SCALE = N.T.S.



DETAIL 3 W/ (B) \*  
SCALE: 1/2" = 0'-1"

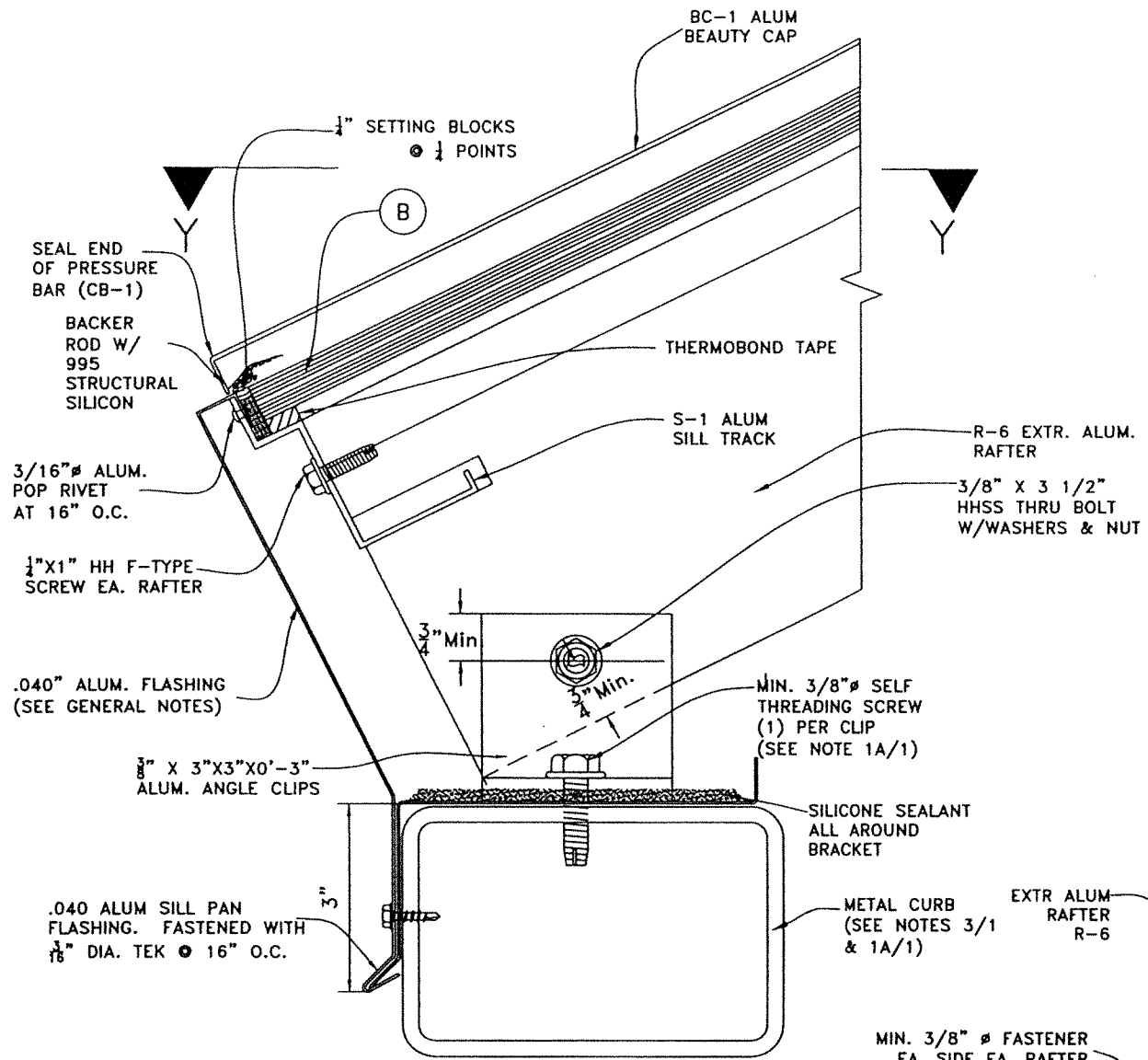
\* NOTE:

SEE SHEET 2A FOR  
GLAZING DETAIL  
W/ GLASS (A)

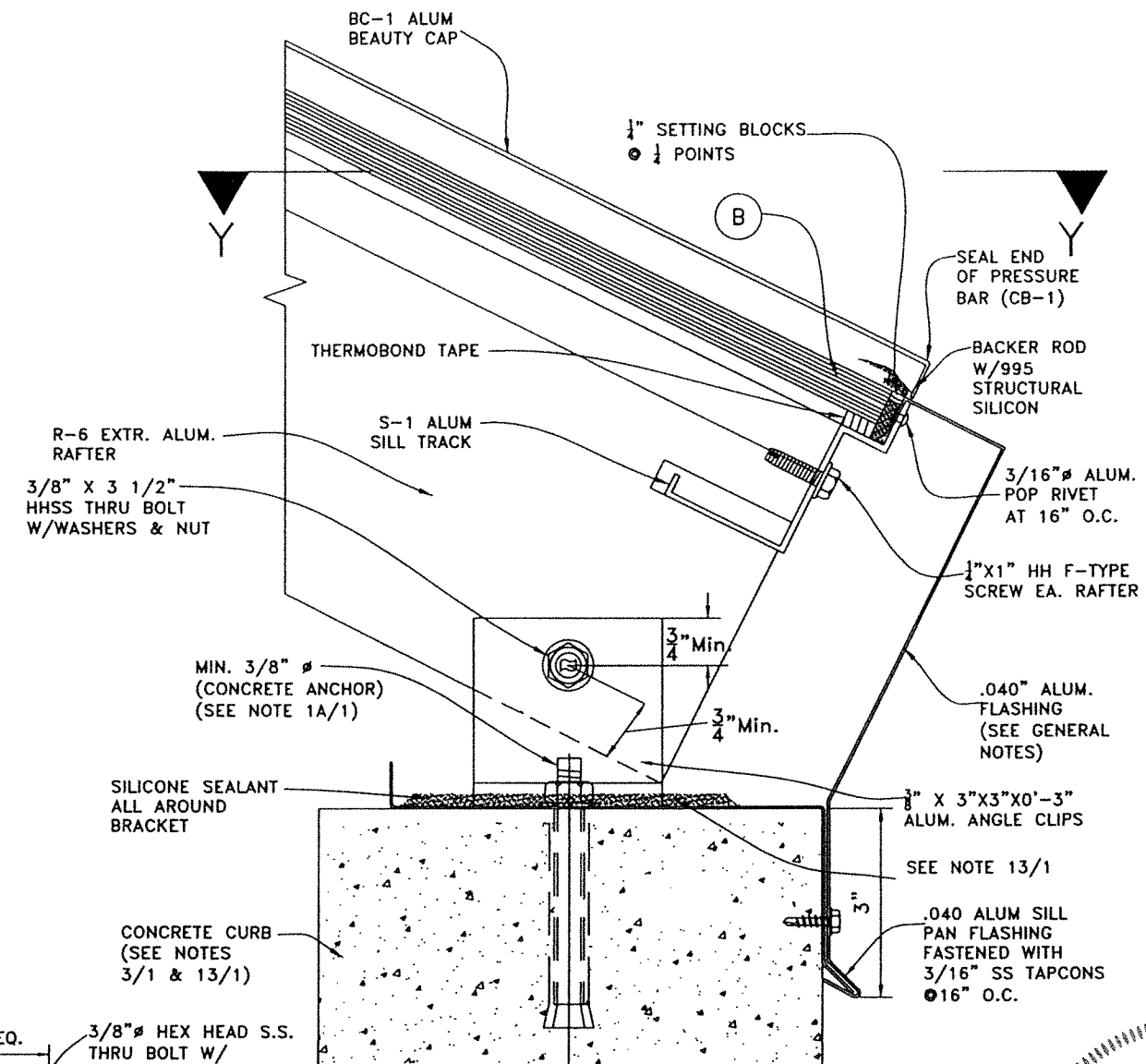


FLORIDA BUILDING CODE (HIGH & NON HIGH VELOCITY HURRICANE ZONE)		Y.M. DRAWN BY:	7/14/2023 DATE:
IMPACT RESISTANT SCI-H500 SKYLIGHT SYSTEM (L.M.I.)		23-097 DRAWING NO.	
TILTECO INC. 12023 TILTECO, INC.		SKYLIGHT CONCEPTS, INC. 9715 W. BROWARD BLVD #264 PLANTATION, FLORIDA 33324	
TILTECO INC. TILLIT TESTING & ENGINEERING COMPANY 4535 N.W. 34th St., Suite 100 Fort Lauderdale, FL 33309 Phone: (954) 771-1530 Fax: (954) 771-1531		REV.	DATE
WALTER A. TILLIT JR., P.E. FLORIDA Lic. # 44107		1	7/14/2023
		2	
		3	
		4	
		5	
		6	
		7	
		8	
		9	
		10	
		11	
		12	
		13	
		14	
		15	
		16	
		17	
		18	
		19	
		20	
		21	
		22	
		23	
		24	
		25	
		26	
		27	
		28	
		29	
		30	
		31	
		32	
		33	
		34	
		35	
		36	
		37	
		38	
		39	
		40	
		41	
		42	
		43	
		44	
		45	
		46	
		47	
		48	
		49	
		50	
		51	
		52	
		53	
		54	
		55	
		56	
		57	
		58	
		59	
		60	
		61	
		62	
		63	
		64	
		65	
		66	
		67	
		68	
		69	
		70	
		71	
		72	
		73	
		74	
		75	
		76	
		77	
		78	
		79	
		80	
		81	
		82	
		83	
		84	
		85	
		86	
		87	
		88	
		89	
		90	
		91	
		92	
		93	
		94	
		95	
		96	
		97	
		98	
		99	
		100	

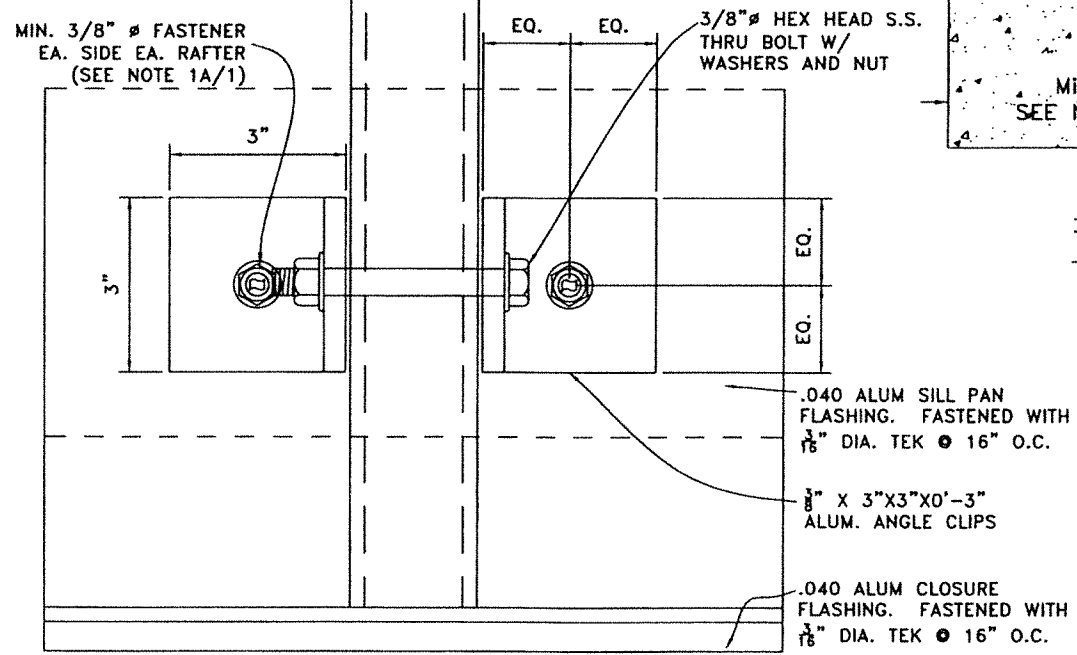
P.E. SEAL/SIGNATURE/DATE



**DETAIL 1 W/ (B) \***  
**TO METAL**  
 SCALE: N.T.S.



**DETAIL 1 W/ (B) \***  
**TO CONCRETE**  
 SCALE: N.T.S.



**SECTION Y-Y**  
**(PLAN)**

**SILL DETAIL CONNECTION (SIDE VIEW)**

\* NOTE:  
 SEE SHEET 2A FOR  
 GLAZING DETAIL  
 W/ GLASS (A)

FLORIDA BUILDING CODE (HIGH & NON HIGH VELOCITY HURRICANE ZONE)

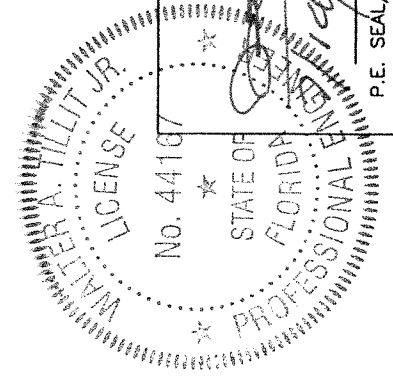
IMPACT RESISTANT SCI-H500 SKYLIGHT SYSTEM (L.M.I.)

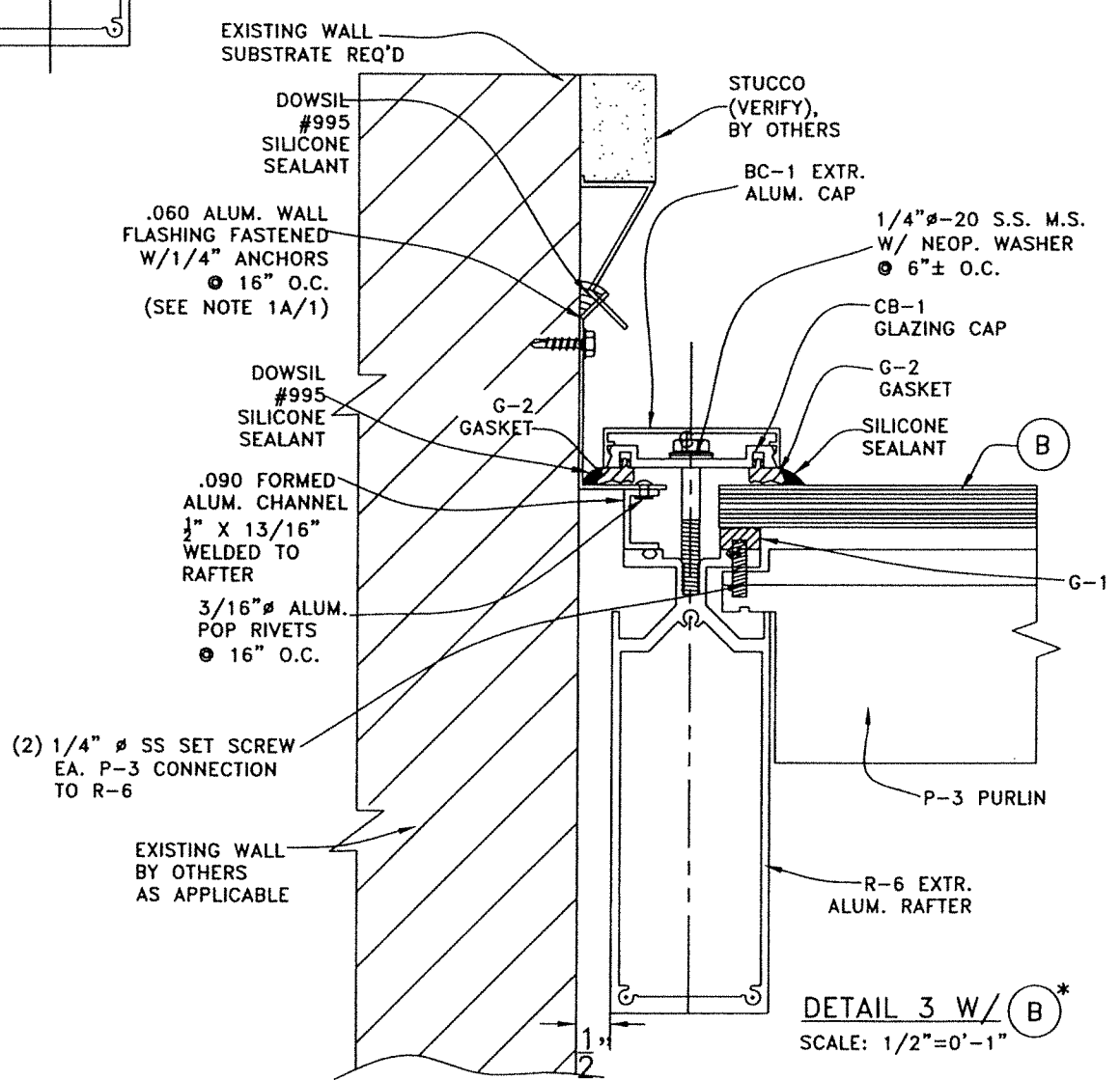
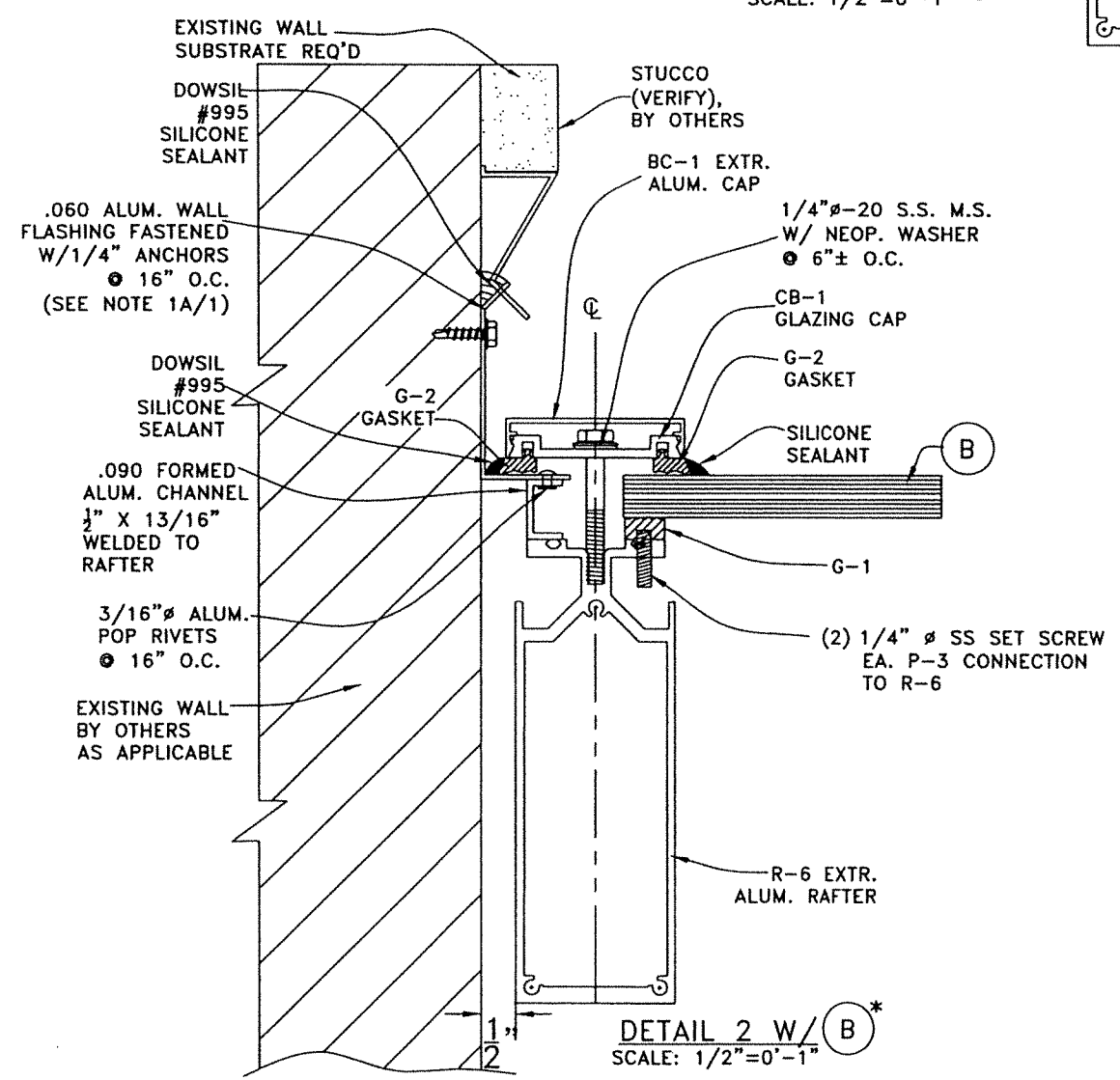
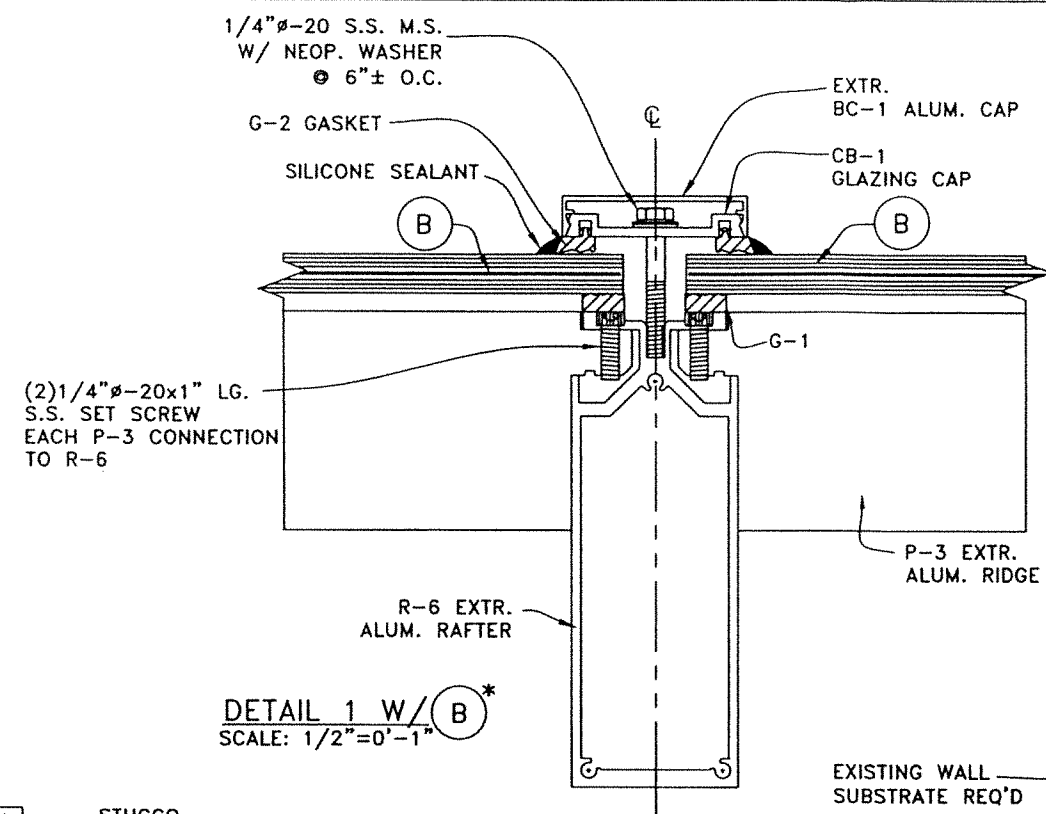
SKYLIGHT CONCEPTS, INC.  
 9715 W. BROWARD BLVD #264  
 PLANTATION, FLORIDA 33324

TILECO INC.  
 TILE TESTING & ENGINEERING COMPANY  
 4355 N.W. 34th St., Suite 105, Virginia Gardens, FL 33146  
 Phone: (305) 971-1511 Fax: (305) 971-1511  
 WALTER A. TILLIT JR., P.E.  
 FLORIDA Lic. # 44187

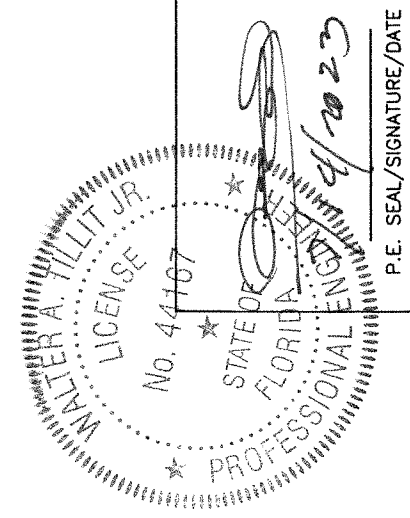
REV.	NO.	DATE	DESCRIPTION
1	1	04/21/2021	
2	2	07/12/2023	

Y.M. DRAWN BY: 7/14/2023 DATE: 23-097 DRAWING NO. SHEET 5 OF 14





\*NOTE:  
SEE SHEET 2A FOR GLAZING DETAIL W/ GLASS (A)



FLORIDA BUILDING CODE (HIGH & NON HIGH VELOCITY HURRICANE ZONE)

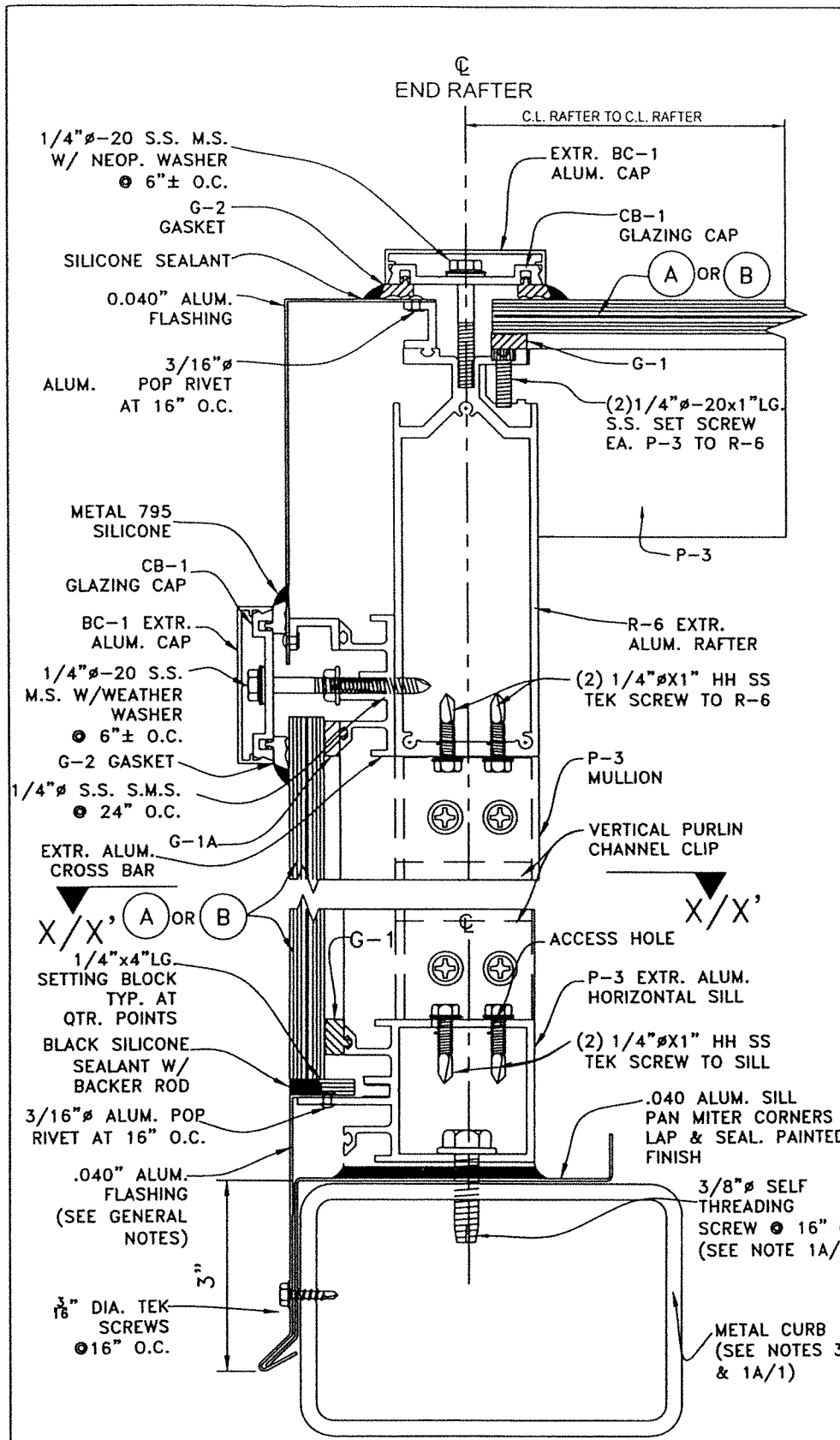
IMPACT RESISTANT SCI-H500 SKYLIGHT SYSTEM (L.M.I.)

Y.M. DRAWN BY: 7/14/2023 DATE: 23-097 DRAWING NO. SHEET 6 OF 14

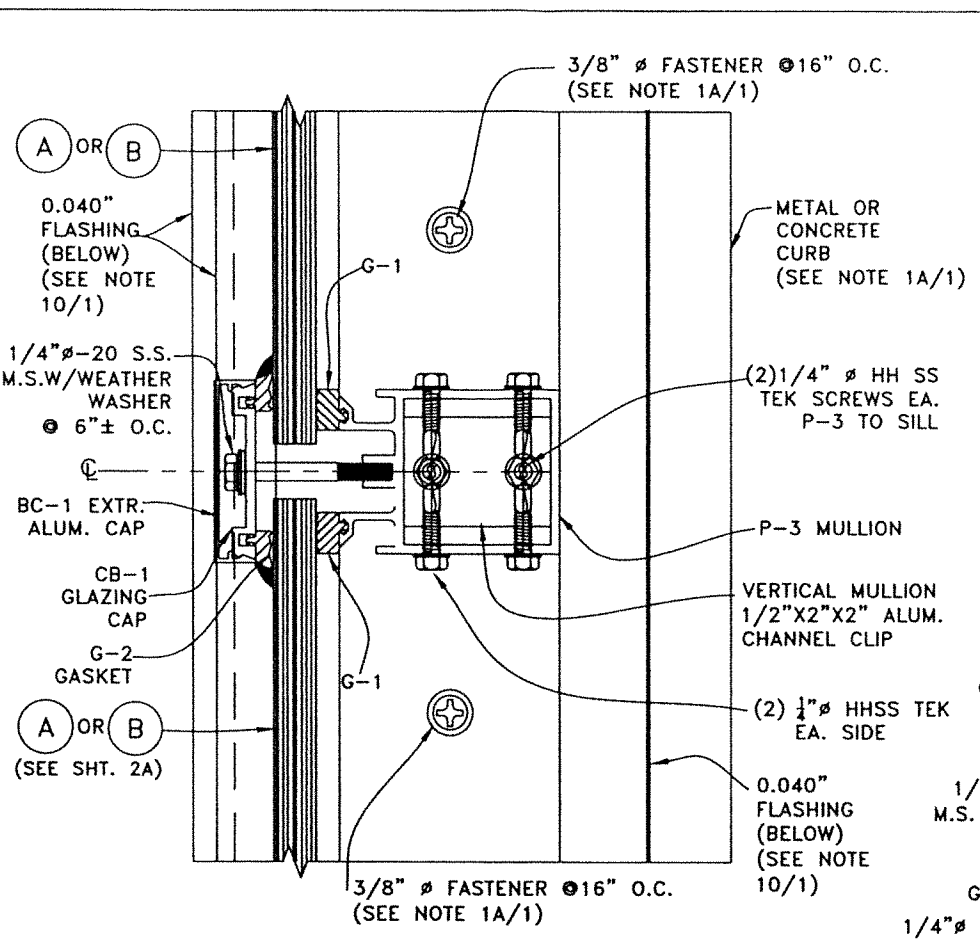
SKYLIGHT CONCEPTS, INC.  
9715 W. BROWARD BLVD #264  
PLANTATION, FLORIDA 33324

TILECO INC.  
TILLIT TESTING & ENGINEERING COMPANY  
1555 N.W. 34th St., Ft. Lauderdale, FL 33309  
Phone: (754) 341-1100 Fax: (754) 341-1101  
CA-0006719 (06/01/15)  
WALTER A. TILLIT JR. P.E.  
FLORIDA Lic. # 44167

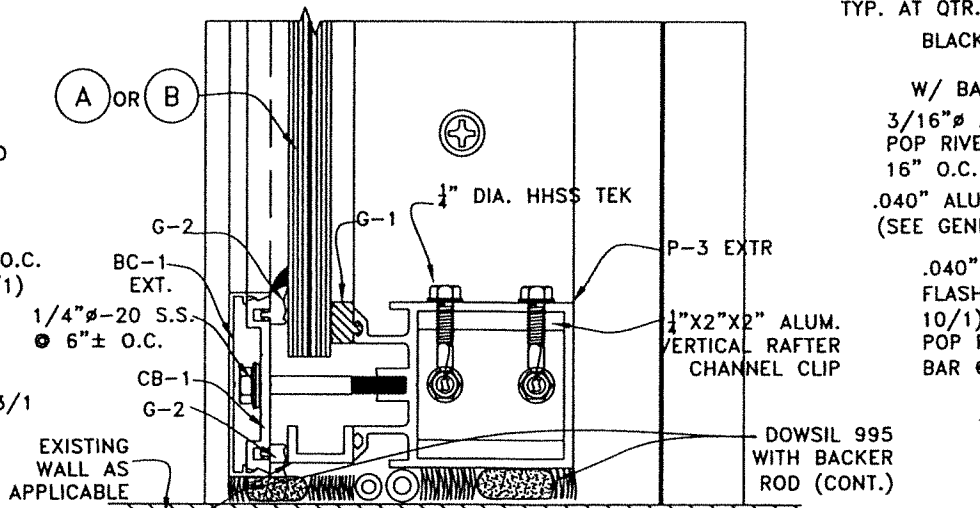
P.E. SEAL/SIGNATURE/DATE



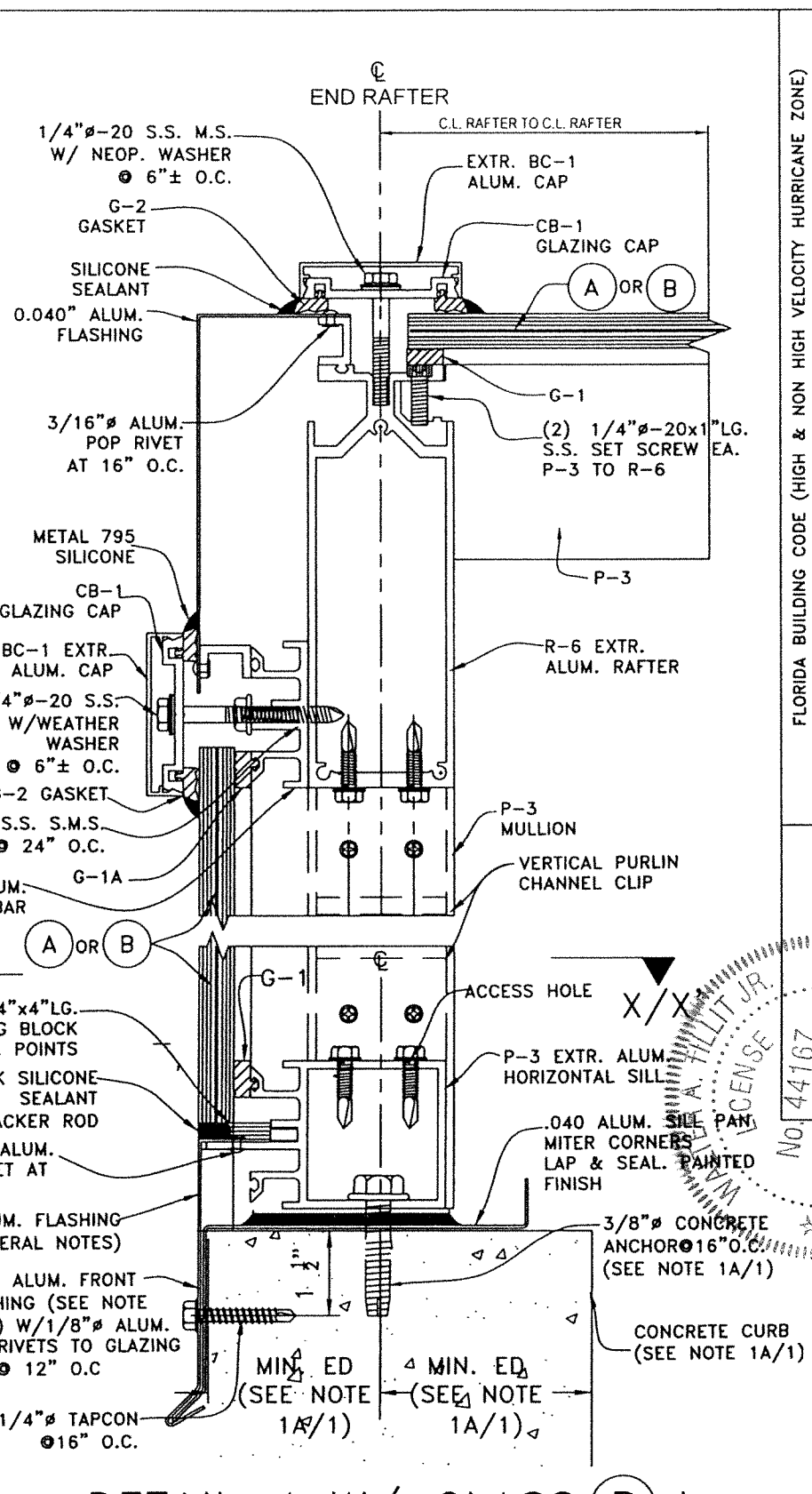
**DETAIL 3 W/ GLASS (B) \***  
**TO METAL**  
 SCALE: N.T.S.



**SECTION X-X W/ GLASS (B) \***  
 SCALE: N.T.S.



**SECTION X'-X' W/ GLASS (B) \***  
 (IF WALL EXISTS)



**DETAIL 4 W/ GLASS (B) \***  
**TO CONCRETE**  
 SCALE: N.T.S.

\*NOTE:  
 SEE SHEET 2A FOR  
 GLAZING DETAIL  
 W/ GLASS (A)

FLORIDA BUILDING CODE (HIGH & NON HIGH VELOCITY HURRICANE ZONE)

IMPACT RESISTANT SCI-H500 SKYLIGHT SYSTEM (L.M.I.)

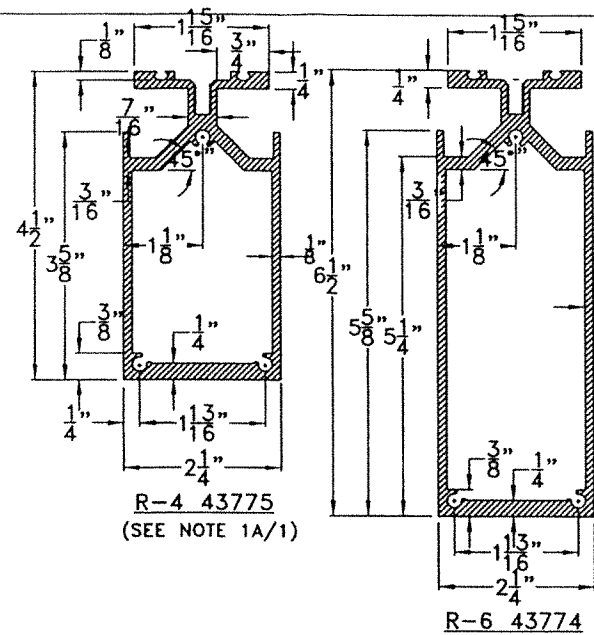
Y.M. DRAWN BY: 7/14/2023  
 DATE: 23-097  
 DRAWING No. SHEET 7 OF 14

SKYLIGHT CONCEPTS, INC.  
 9715 W. BROWARD BLVD #264  
 PLANTATION, FLORIDA 33324

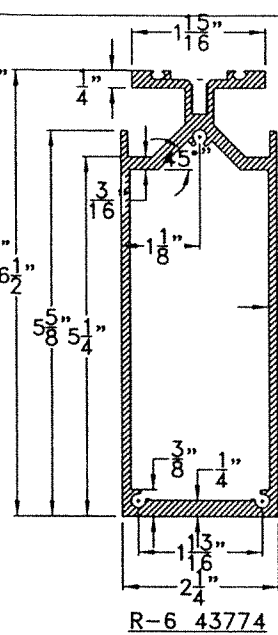
**TILECO INC.**  
 TILE TESTING & ENGINEERING COMPANY  
 4330 N.W. 36th St., Ft. Lauderdale, FL 33309  
 Phone: (561) 546-0000 Fax: (561) 546-1511  
 WALTER A. TILLIT JR., P.E.  
 FLORIDA Lic. # 44167

NO. 44167  
 STATE OF FLORIDA  
 PROFESSIONAL ENGINEER  
 SEAL/SIGNATURE/DATE

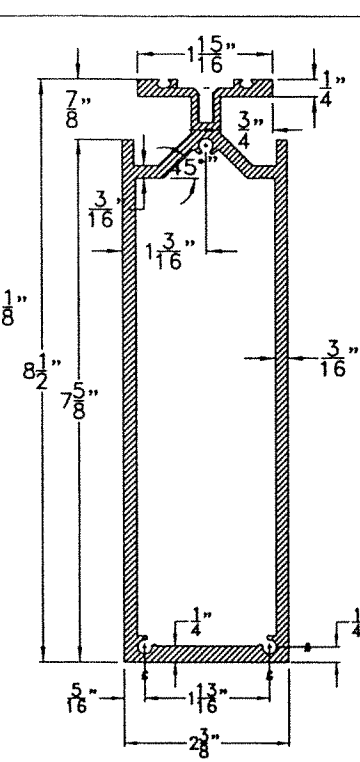




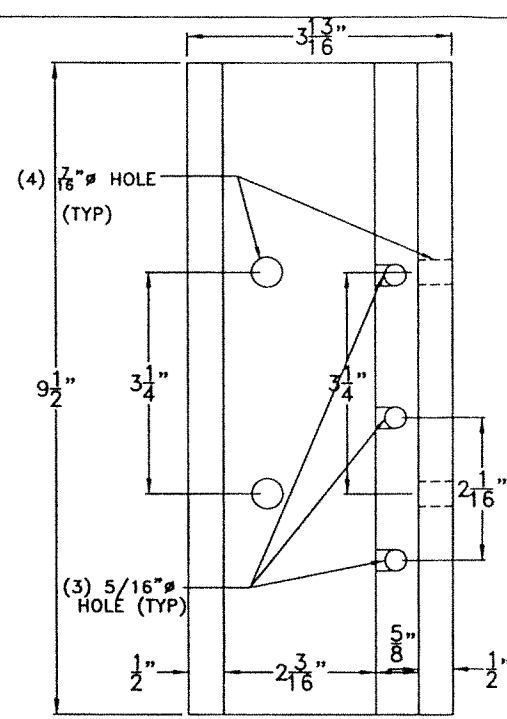
R-4 43775  
(SEE NOTE 1A/1)



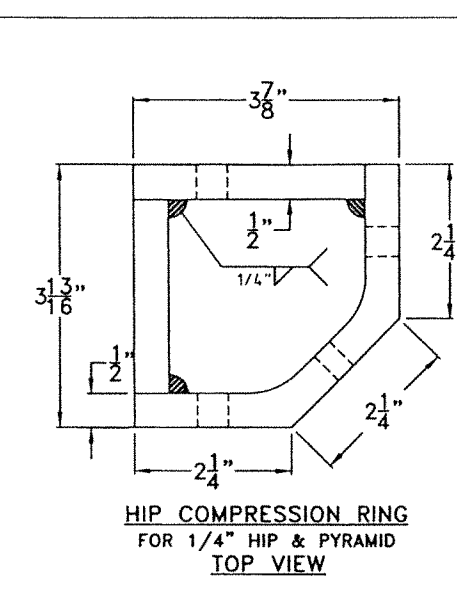
R-6 43774



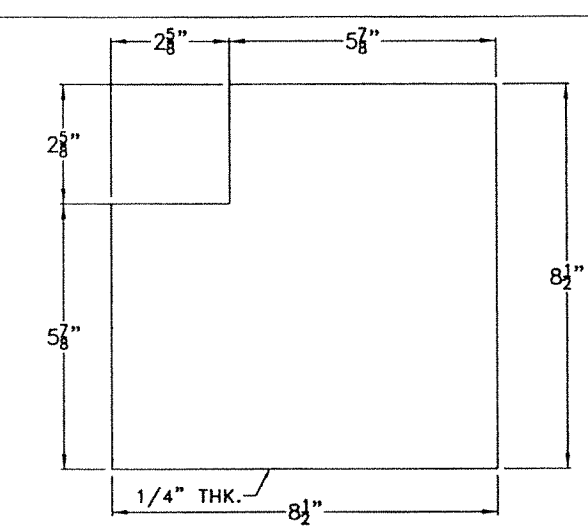
R-8 46263



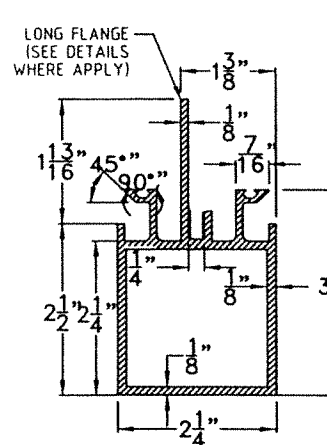
COMPRESSION RING  
(LEFT SIDE ELEVATION)



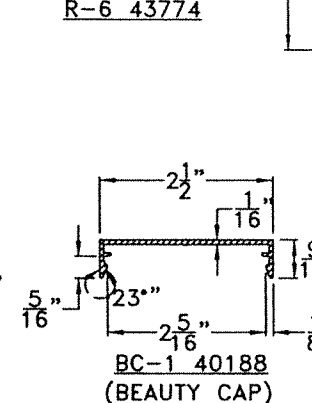
HIP COMPRESSION RING  
FOR 1/4\"/>



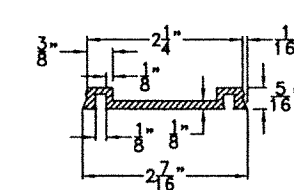
HIP R-8 BASE PLATE



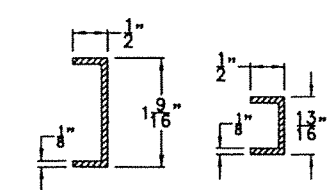
P-3 43728



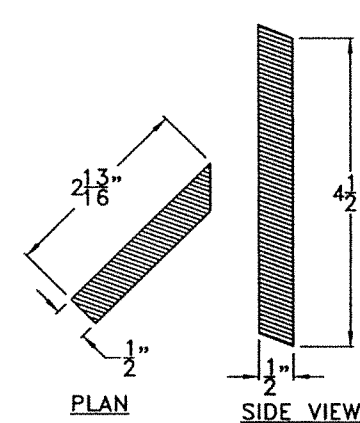
BC-1 40188  
(BEAUTY CAP)



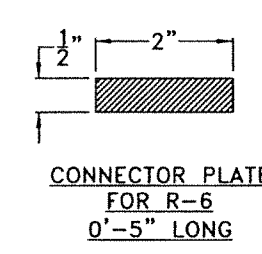
CB-1 40186  
(PRESSURE PLATE)



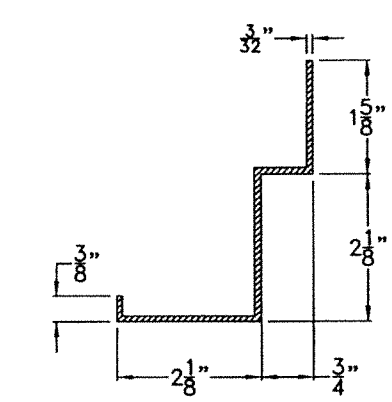
RAFTER FLASHING  
CONNECTION  
3105-H14 ALLOY



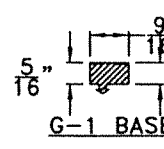
SHEAR BLOCK



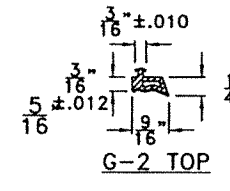
CONNECTOR PLATE  
FOR R-6  
0'-5\"/>



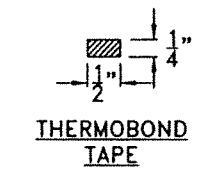
S-1 SILL



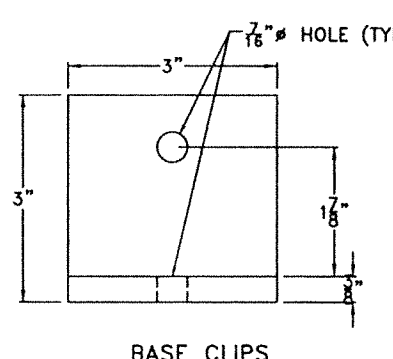
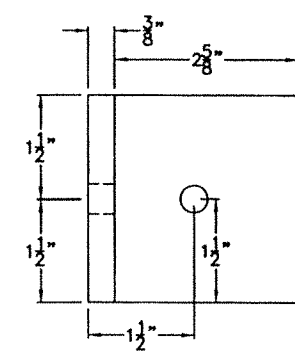
G-1 BASE



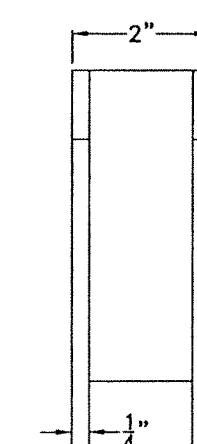
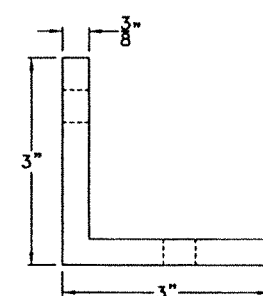
G-2 TOP



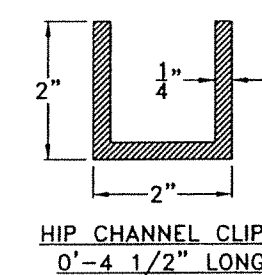
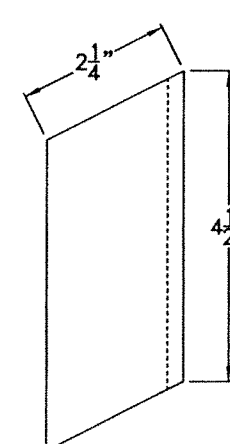
THERMOBOND  
TAPE



BASE CLIPS



MOUNTING CHANNEL FOR R-8



HIP CHANNEL CLIP  
0'-4 1/2\"/>

COMPONENTS FOR HIP GABLE OR PYRAMID ROOF SKYLIGHTS (SEE SHT. 8A FOR GLASS, SEE NOTE 1A/1)

SCALE: N.T.S

FLORIDA BUILDING CODE (HIGH & NON HIGH VELOCITY HURRICANE ZONE)

IMPACT RESISTANT SCI-H500 SKYLIGHT SYSTEM (L.M.I.)

Y.M. DRAWN BY: 7/14/2023  
DATE: 23-097  
DRAWING NO. SHEET 8 OF 14

SKYLIGHT CONCEPTS, INC.  
9715 W. BROWARD BLVD #264  
PLANTATION, FLORIDA 33324

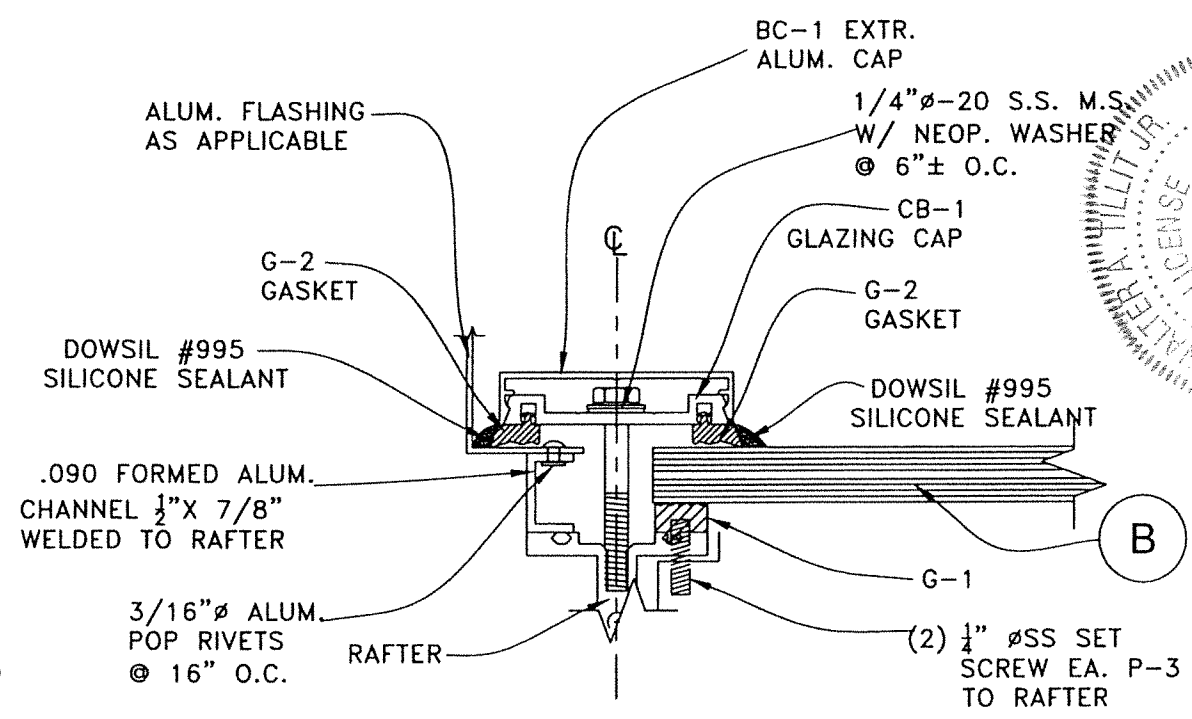
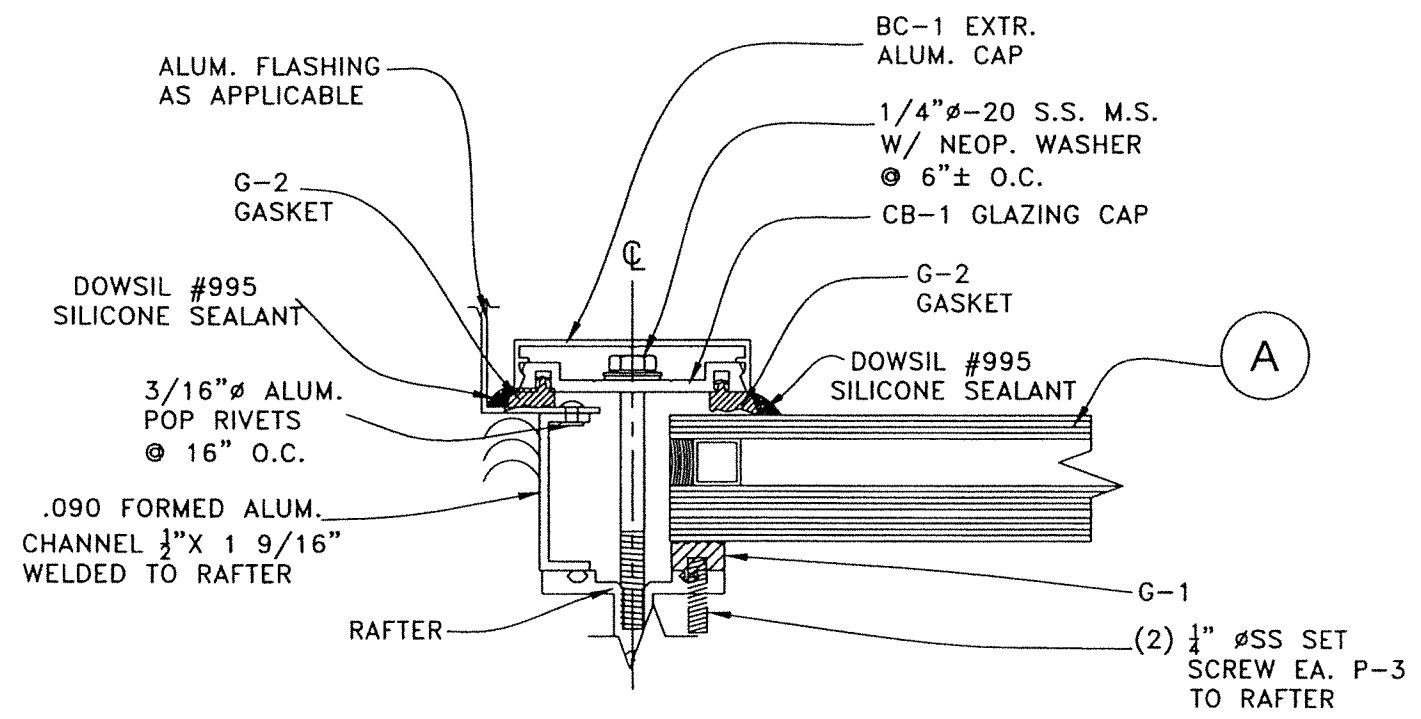
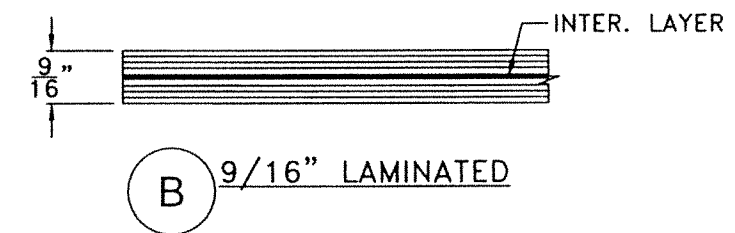
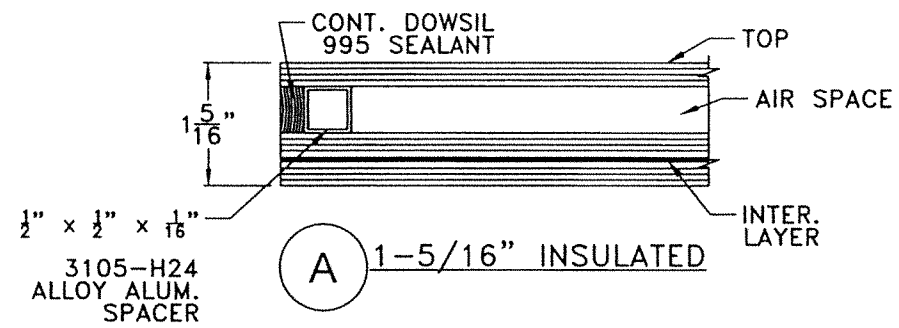
REV. NO.	DESCRIPTION	DATE	BY	CHK. BY
1	ISSUE	7/12/2023		

TILECO INC.  
TILE TESTING & ENGINEERING COMPANY  
1500 N.W. 15th St., Suite 200, Virginia Beach, VA 23462  
Phone: (561) 971-1311  
WALTER A. HILLIT JR., P.E.  
FLORIDA Lic. # 44167

WALTER A. HILLIT JR.  
LICENSE  
No. 44167  
STATE OF FLORIDA  
PROFESSIONAL ENGINEER  
P.E. SEAL/SIGNATURE/DATE

**GLAZING COMPONENTS (VALID FOR HIP OR PYRAMID SKYLIGHTS)**

SKYLIGHT	DESCRIPTION	MATERIAL
A	1 5/16" NOMINAL INSULATED GLASS W/ 1/4" TEMPERED AT TOP + 1/2" AIR SPACE + 1/4" CLEAR H.S. GLASS + 0.090" SGP INTERLAYER BY KURARAY AMERICA, INC. + 1/4" CLEAR H.S. + 1/2" x 1/2" x 1/16" ALUM. ALLOY SPACER	I.G. GLASS
B	9/16" NOMINAL LAMINATED GLASS W/ 1/4" CLEAR H.S. + 0.090" SGP BY KURARAY AMERICA, INC. + 1/4" CLEAR H.S.	L.G. GLASS



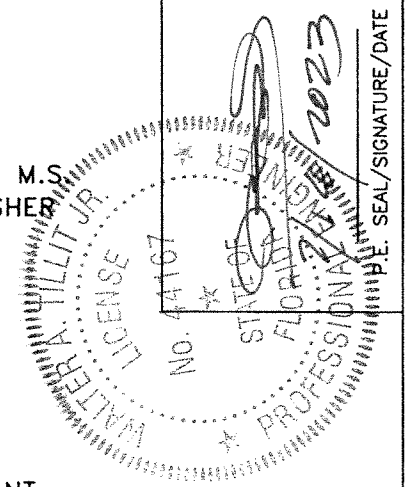
**GLAZING DETAIL W/ 1 5/16" INSULATED GLASS **A****  
SCALE: 1/2" = 0'-1"

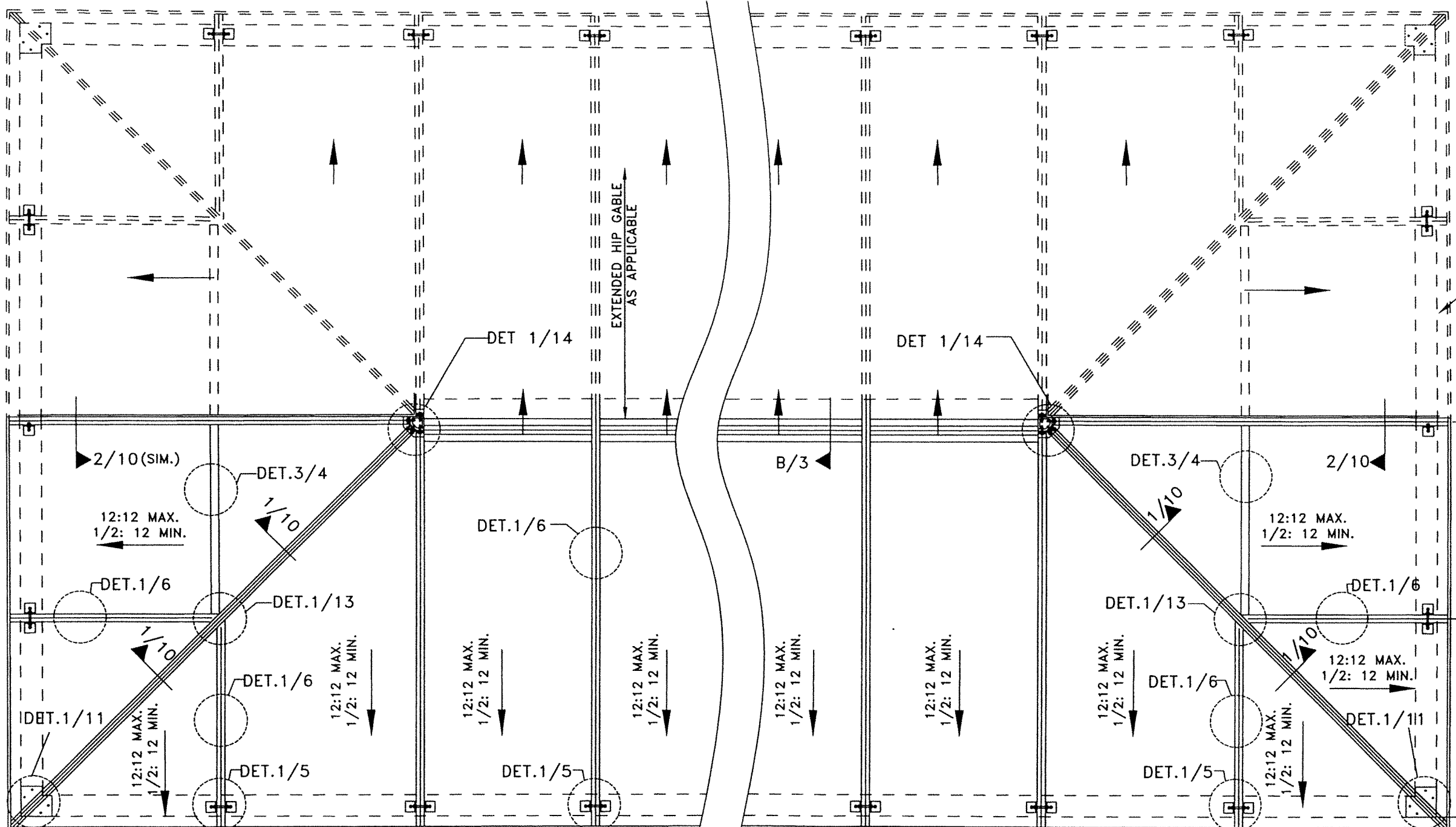
**GLAZING DETAIL W/ 9/16" LAMINATED GLASS **B****  
SCALE: 1/2" = 0'-1"

FLORIDA BUILDING CODE (HIGH & NON HIGH VELOCITY HURRICANE ZONE)  
IMPACT RESISTANT SCI-H500 SKYLIGHT SYSTEM (L.M.I.)  
TILECO INC.  
TILIT TESTING & ENGINEERING COMPANY  
4335 N.W. 24th St., Ft. Lauderdale, FL 33309  
Phone: (305) 451-1511  
TILECO INC. 2023 TILECO, INC.  
TILIT TESTING & ENGINEERING COMPANY  
4335 N.W. 24th St., Ft. Lauderdale, FL 33309  
Phone: (305) 451-1511  
WALTER A. TILIT JR., P.E.  
FLORIDA Lic. # 44167

DATE	DESCRIPTION	BY	CHK
7/14/2023			
23-097			

DRAWING NO. 23-097  
SHEET BA OF 14





EXISTING CURB TYPICAL ALL AROUND

$4'-7\frac{5}{8}"$  MAX.     $4'-7\frac{5}{8}"$  MAX.     $4'-1\frac{1}{2}"$      $4'-1\frac{1}{2}"$      $4'-1\frac{1}{2}"$      $4'-1\frac{1}{2}"$      $4'-7\frac{5}{8}"$  MAX.     $4'-7\frac{5}{8}"$  MAX.

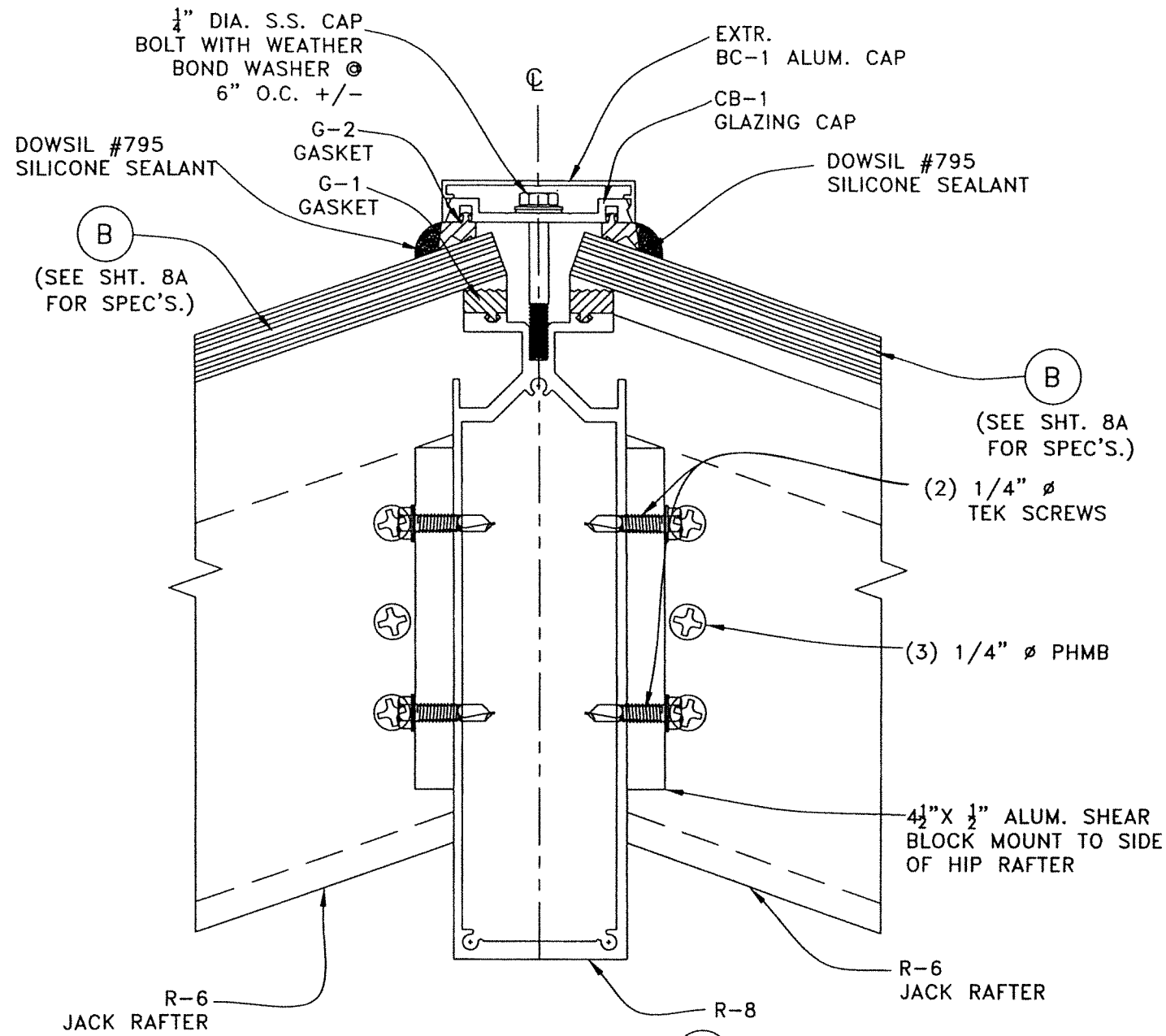
$9'-5\frac{3}{8}"$  MAX. W/ R-6 (JACK RAFTER) & R-8 (HIP) AS APPLICABLE (SEE NOTE 1A/1)    UNLIMITED AMOUNT OF  $4'-1\frac{1}{2}"$  (MAX.) BAYS AT GABLE OR MONOSLOPE AS APPLICABLE (SEE NOTES 1A, 11 SHT. 1)     $9'-5\frac{3}{8}"$  MAX. W/ R-6 (JACK RAFTER) & R-8 (HIP) AS APPLICABLE (SEE NOTE 1A/1)

**GENERIC HIP/PYRAMID ROOF FRAMING PLAN** (SEE NOTE 1A)  
 SCALE= N.T.S.

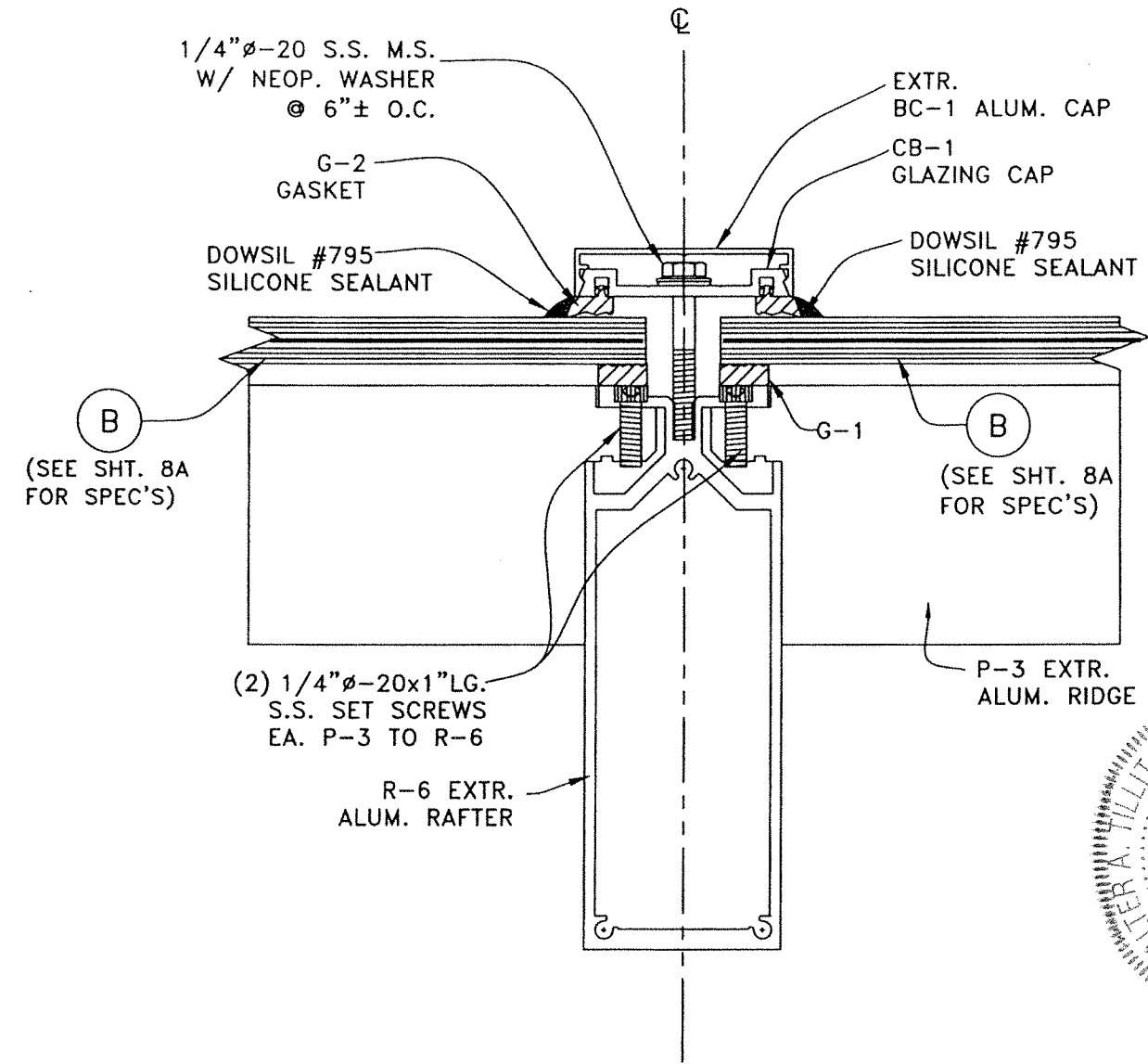
FLORIDA BUILDING CODE (HIGH & NON HIGH VELOCITY HURRICANE ZONE)	
IMPACT RESISTANT SCI-H500 SKYLIGHT SYSTEM (L.M.I.)	T.M. DRAWN BY: 7/14/2023 DATE: 23-097 DRAWING NO.
SKYLIGHT CONCEPTS, INC. 9715 W. BROWARD BLVD #264 PLANTATION, FLORIDA 33324	
TILTECO, INC. 2023 TILTECO, INC. TILIT TESTING & ENGINEERING COMPANY 1355 N.W. 34th St., Suite 205, West Palm Beach, FL 33411 Phone: 1 (561) 933-1111 Fax: 1 (561) 933-1111 CA-0006719 (06/01/15)	DATE: 7/14/2023 REV. NO. 1 OLD FILE NO.
WALTER A. TILIT JR., P.E. FLORIDA Lic. # 44167	DATE:

4'-7<sup>5</sup>/<sub>8</sub>" MAX.  
 9'-5 <sup>3</sup>/<sub>8</sub>" MAX. W/ R-6 (JACK RAFTER) & R-8 (HIP) (SEE NOTE 1A/1)

WALTER A. TILIT JR. P.E. No. 44167  
 STATE OF FLORIDA  
 PROFESSIONAL ENGINEER  
 SEAL/SIGNATURE/DATE



SECTION 1 W/ (B) \*  
SCALE: 1/2" = 0'-1"



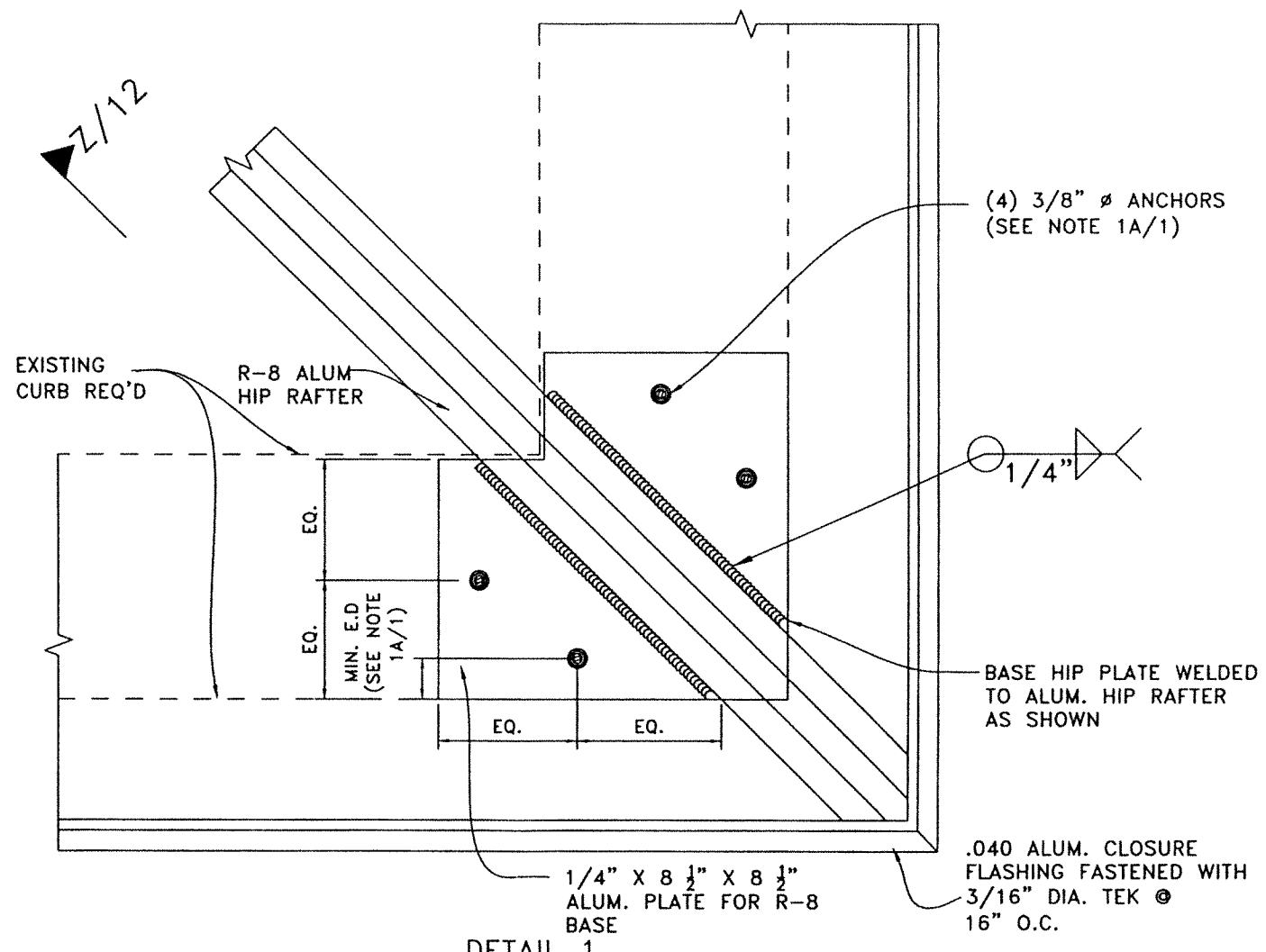
SECTION 2 W/ (B) \*  
SCALE: 1/2" = 0'-1"

\* NOTE:  
SEE SHEET 8A FOR  
GLAZING DETAIL  
W/ GLASS (A)

FLORIDA BUILDING CODE (HIGH & NON HIGH VELOCITY HURRICANE ZONE)		Y.M. DRAWN BY:	7/14/2023 DATE:	23-097 DRAWING No.	SHEET 10 OF 14
IMPACT RESISTANT SCI-H500 SKYLIGHT SYSTEM (L.M.I.)		SKYLIGHT CONCEPTS, INC. 9715 W. BROWARD BLVD. #264 PLANTATION, FLORIDA 33324			
REV. NO.	DATE	DESCRIPTION	DATE	REV. NO.	DATE
1	08/31/23	7/14/2023		1	
2				2	
3				3	

©2023 TILECO, INC.  
**TILECO INC.**  
TILLIT TESTING & ENGINEERING COMPANY  
6330 N.W. 34th St., Ft. Lauderdale, FL 33314  
Phone: (561) 771-1501  
Fax: (561) 771-1501  
CA-0008718  
WALTER A. TILLIT JR., P.E.  
FLORIDA Lic. # 44187

No. 44187  
STATE OF FLORIDA  
WALTER A. TILLIT JR.  
LICENSE  
PROFESSIONAL ENGINEER  
P.E. SEAL/SIGNATURE/DATE



**DETAIL 1**  
**HIP RAFTER MOUNTING AT SILL (PLAN)**  
 SCALE: N.T.S.

(4) 3/8" Ø ANCHORS  
 (SEE NOTE 1A/1)

BASE HIP PLATE WELDED  
 TO ALUM. HIP RAFTER  
 AS SHOWN

.040 ALUM. CLOSURE  
 FLASHING FASTENED WITH  
 3/16" DIA. TEK Ⓞ  
 16" O.C.

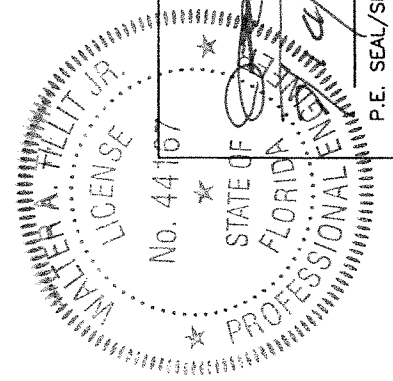
EXISTING CURB REQ'D

R-8 ALUM  
 HIP RAFTER

EQ.  
 EQ.  
 EQ.  
 EQ.

MIN. E.D.  
 (SEE NOTE  
 1A/1)

1/4" X 8 1/2" X 8 1/2"  
 ALUM. PLATE FOR R-8  
 BASE



FLORIDA BUILDING CODE (HIGH & NON HIGH VELOCITY HURRICANE ZONE)

©2023 TILTECO, INC.

**TILTECO INC.**  
 TILLIT TESTING & ENGINEERING COMPANY  
 6335 N.W. 36th St., 3rd Floor, Suite 300, West Palm Beach, FL 33416  
 Phone: (561) 831-1300 Fax: (561) 831-1301

IMPACT RESISTANT SCI-H500  
 SKYLIGHT SYSTEM (L.M.I.)

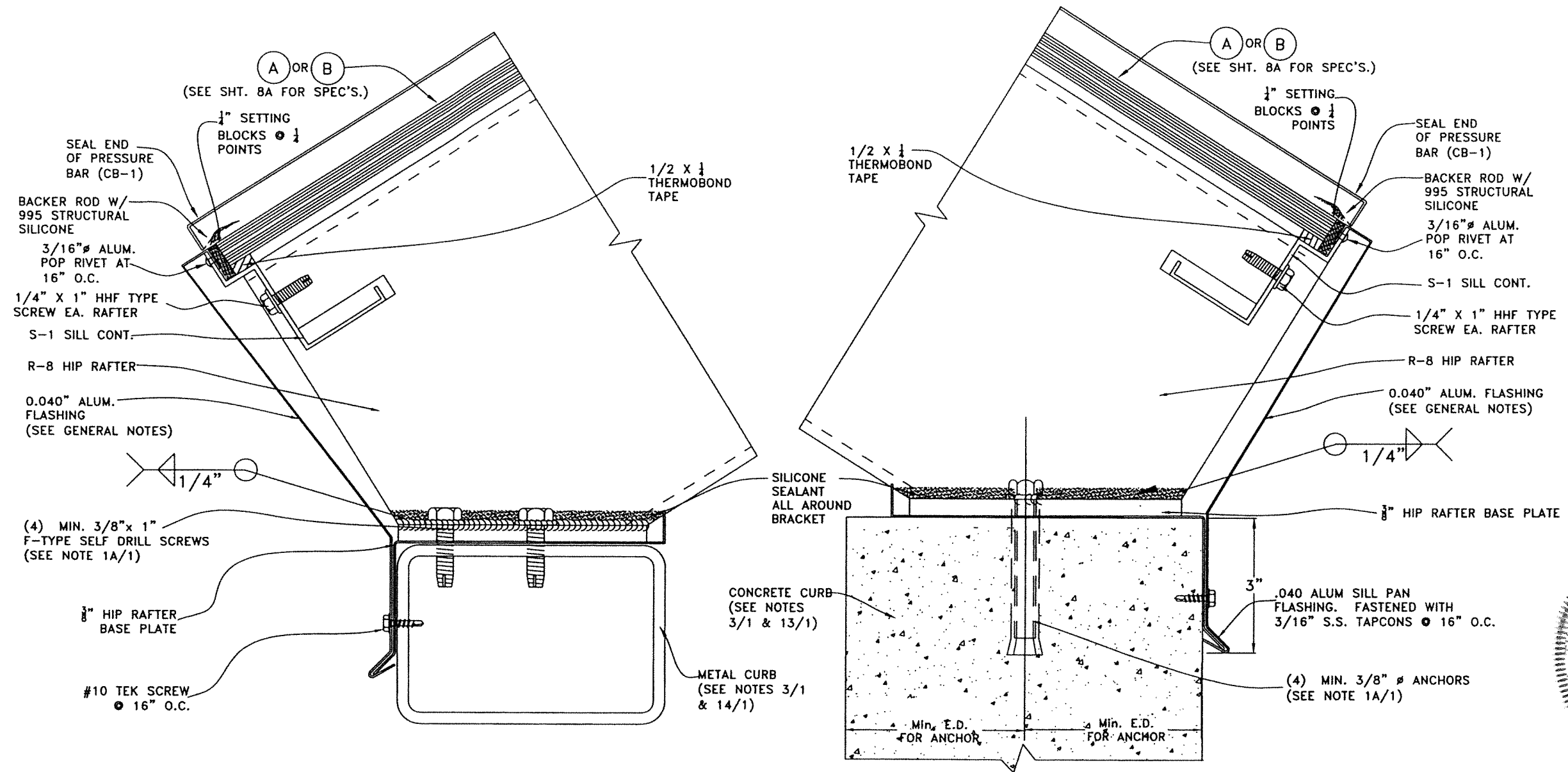
SKYLIGHT CONCEPTS, INC.  
 9715 W. BROWARD BLVD #264  
 PLANTATION, FLORIDA 33324

REV. NO.	DATE	DESCRIPTION	BY	CHK. BY	DATE
1	04/14/2023				
2					
3					

Y.M. DRAWN BY: 7/14/2023  
 DATE: 23-097  
 DRAWING No. SHEET 11 OF 14

WALTER A. TILLIT JR., P.E.  
 FLORIDA Lic. # 44167

P.E. SEAL/SIGNATURE/DATE



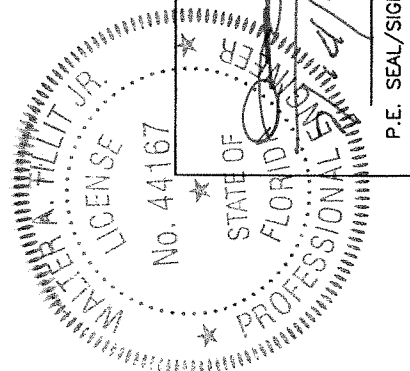
**HIP RAFTER CONNECTION TO METAL**  
SCALE: N.T.S.

**HIP RAFTER CONNECTION TO CONCRETE**  
SCALE: N.T.S.

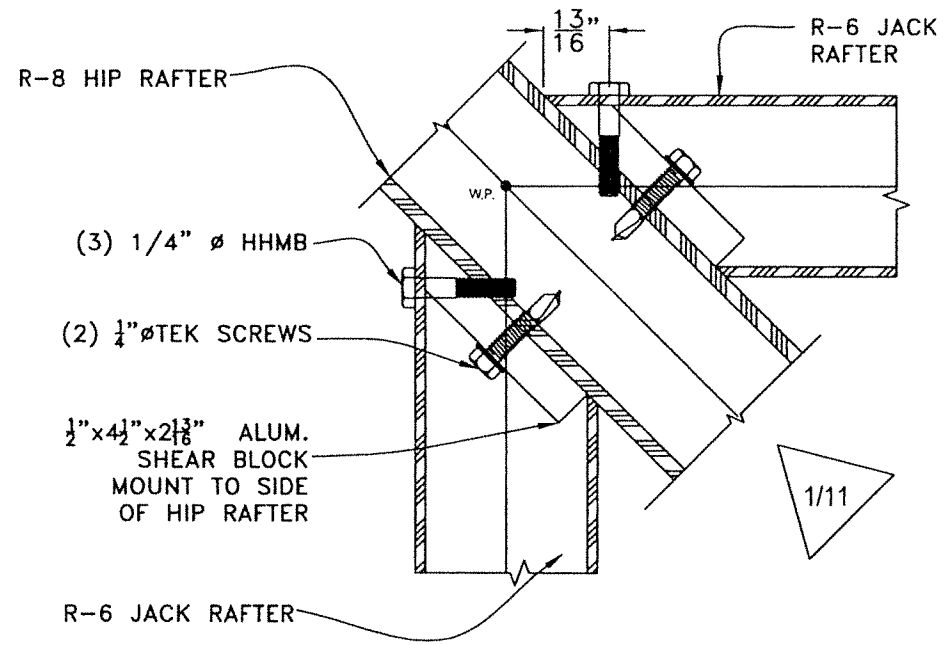
**VIEWS Z-Z**

FLORIDA BUILDING CODE (HIGH & NON HIGH VELOCITY HURRICANE ZONE)		
Y.M. DRAWN BY:	IMPACT RESISTANT SCI-H500 SKYLIGHT SYSTEM (L.M.I.)	
DATE:	7/14/2023	
DRAWING NO.:	23-097	
SHEET 12 OF 14		
<b>SKYLIGHT CONCEPTS, INC.</b> 9715 W. BROWARD BLVD #264 PLANTATION, FLORIDA 33324		
REV. NO.	DATE	DESCRIPTION
1	7/14/2023	
2		

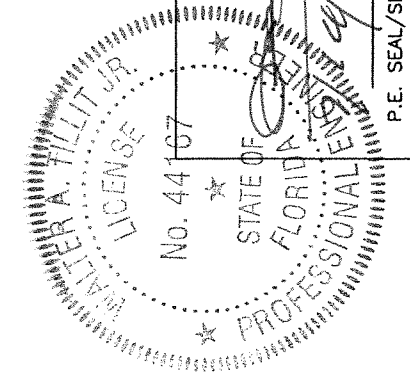
©2023 TILECO, INC.  
**TILECO INC.**  
 TILE TESTING & ENGINEERING COMPANY  
 6350 N.W. 36th St., Ste. 200, Miami Gardens, FL 33146  
 Phone: 1 (305) 671-1151  
 FAX: 1 (305) 671-1151  
 WALTER A. TILLIT JR., P.E.  
 FLORIDA Lic. # 44167



P.E. SEAL/SIGNATURE/DATE

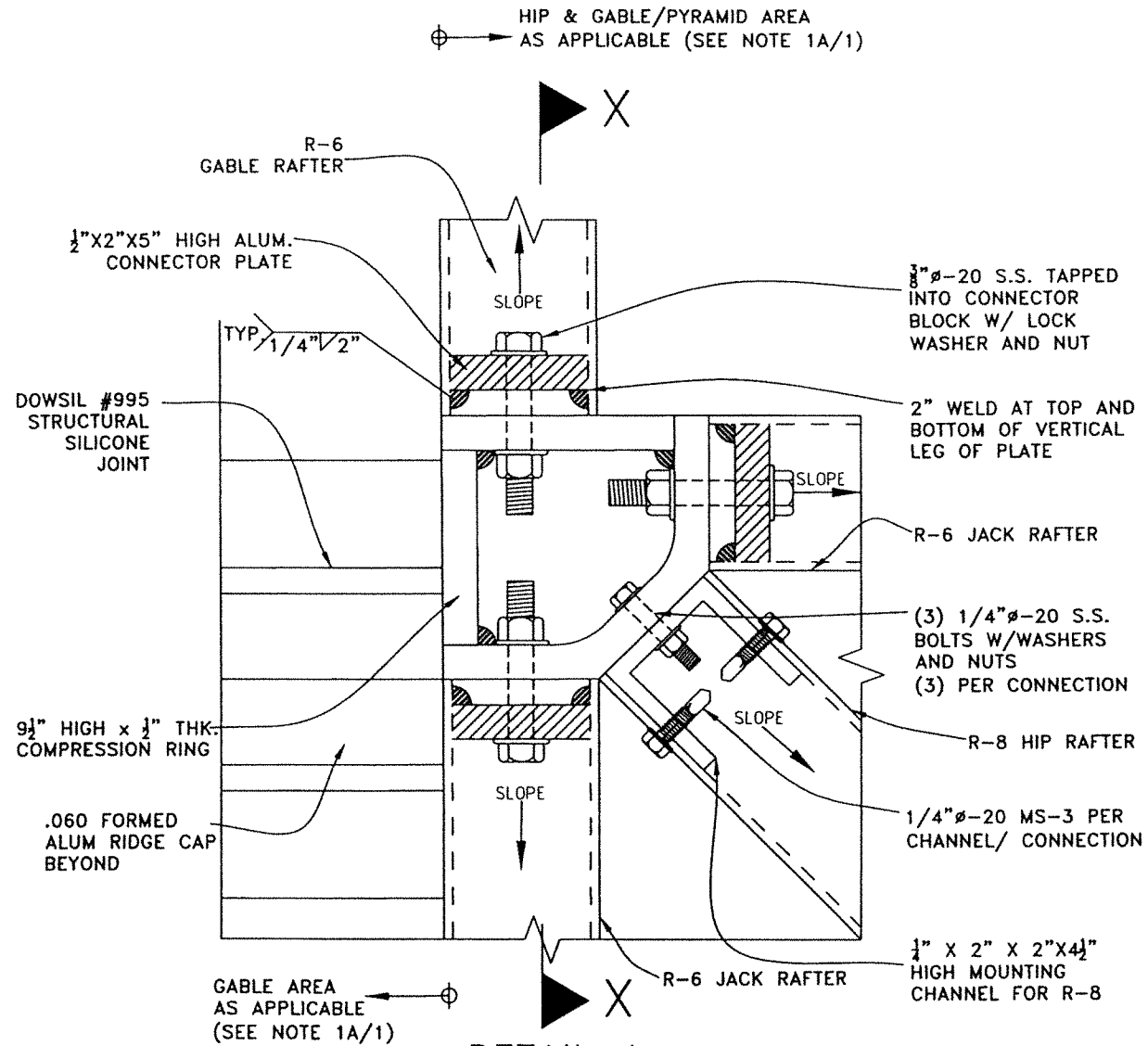


**DETAIL 1**  
**JACK RAFTER CONNECTION TO HIP RAFTER**  
 SCALE: N.T.S.  
**(PLAN)**



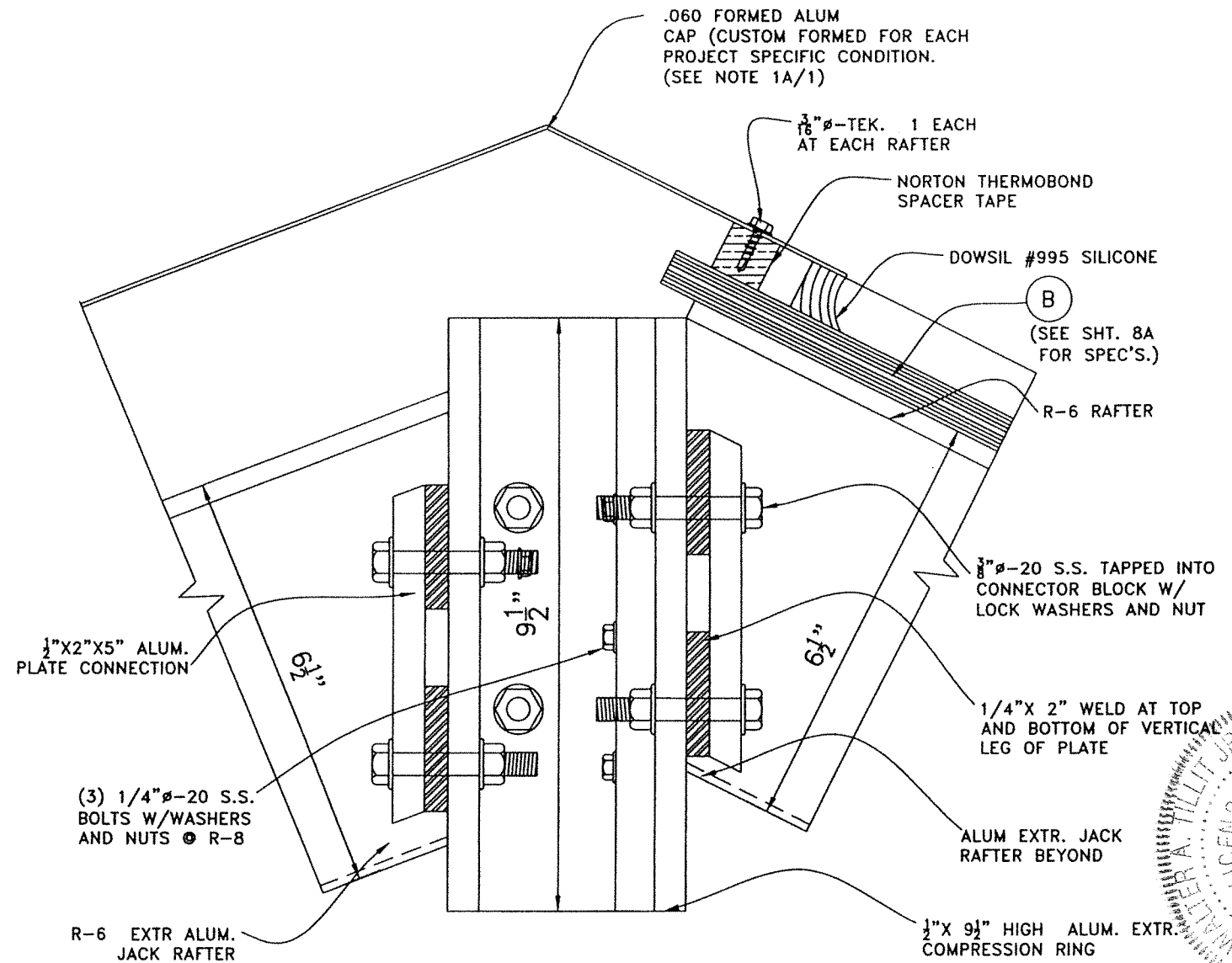
FLORIDA BUILDING CODE (HIGH & NON HIGH VELOCITY HURRICANE ZONE)		Y.M. DRAWN BY:	7/14/2023 DATE:
IMPACT RESISTANT SCI-H500 SKYLIGHT SYSTEM (L.M.I.)		SKYLIGHT CONCEPTS, INC. 9715 W. BROWARD BLVD #264 PLANTATION, FLORIDA 33324	
NO. 1	DATE 7/14/23	NO. 2	DATE -
NO. 3	DATE -	NO. 4	DATE -
TILECO INC. 172023 TILECO, INC. TILLIT TESTING & ENGINEERING COMPANY TILLIT A.W. JR., P.E., 305. VERNON GARDEN, FL 33146 Phone: (305) 971-1511 FAX: (305) 971-1511			DRAWING No. 23-097
WALTER A. TILLIT JR., P.E. FLORIDA Lic. # 44167			SHEET 13 OF 14

P.E. SEAL/SIGNATURE/DATE



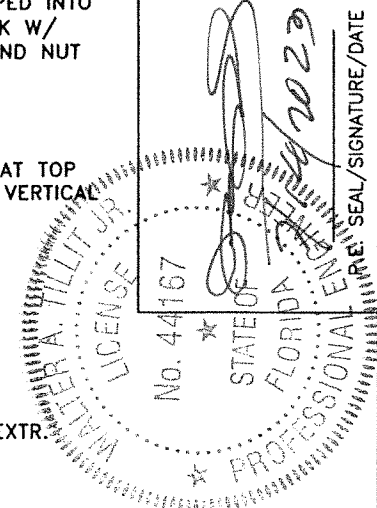
**DETAIL 1**  
**COMPRESSION RING**  
 (PLAN)  
 SCALE: N.T.S.

\* NOTE:  
 SEE SHEET 8A FOR  
 GLAZING DETAIL  
 W/ GLASS (A)



**SECTION X-X AT**  
**COMPRESSION RING W/ (B)**  
 SCALE: N.T.S.

IMPACT RESISTANT SCI-H500 SKYLIGHT SYSTEM (L.M.I.)		Y.M. DATE: 7/14/2023
FLORIDA BUILDING CODE (HIGH & NON HIGH VELOCITY HURRICANE ZONE)		DATE: 23-097
SKYLIGHT CONCEPTS, INC. 9715 W. BROWARD BLVD #264 PLANTATION, FLORIDA 33324		DRAWING NO. 23-097
TILECO INC. TILIT TESTING & ENGINEERING COMPANY 888 Phoenicia Blvd., Suite 100 Phoenicia, CA 95071-1530 Fax: 1-800-971-1511	DATE: 7/14/2023	DRAWING NO. 23-097
© 2023 TILECO, INC.	DATE: 7/14/2023	DRAWING NO. 23-097
WALTER A. TILLIT JR., P.E. FLORIDA Lic. # 44167	DATE: 7/14/2023	DRAWING NO. 23-097







**Product Approval**  
USER: Public User

[Product Approval Menu](#) > [Product or Application Search](#) > [Application List](#) > **Application Detail**

OFFICE OF THE  
SECRETARY

FL #	FL41821-R1										
Application Type	Revision										
Code Version	2023										
Application Status	Approved										
Comments											
Archived	<input type="checkbox"/>										
Product Manufacturer	SKYLIGHT CONCEPTS, INC.										
Address/Phone/Email	2743 NW 30 AV Lauderdale Lakes, FL 33311 (954) 776-7616 mkg@skycon.us										
Authorized Signature	Myron Goodrich mkg@skycon.us										
Technical Representative											
Address/Phone/Email											
Quality Assurance Representative											
Address/Phone/Email											
Category	Sky Lights										
Subcategory	Skylight										
Compliance Method	Evaluation Report from a Florida Registered Architect or a Licensed Florida Professional Engineer <input type="checkbox"/> Evaluation Report - Hardcopy Received										
Florida Engineer or Architect Name who developed the Evaluation Report	Walter A. Tillit Jr.										
Florida License	PE-44167										
Quality Assurance Entity	National Accreditation and Management Institute										
Quality Assurance Contract Expiration Date	12/31/2024										
Validated By	John W. Knezevich, PE <input checked="" type="checkbox"/> Validation Checklist - Hardcopy Received										
Certificate of Independence	<a href="#">FL41821_R1_COI_COI_Drwg_23-097_SKYLIGHT_CONCEPTS_INC_.pdf</a>										
Referenced Standard and Year (of Standard)	<table border="0"> <thead> <tr> <th><b>Standard</b></th> <th><b>Year</b></th> </tr> </thead> <tbody> <tr> <td>ASTM E1300</td> <td>2009</td> </tr> <tr> <td>TAS 201</td> <td>1994</td> </tr> <tr> <td>TAS 202</td> <td>1994</td> </tr> <tr> <td>TAS 203</td> <td>1994</td> </tr> </tbody> </table>	<b>Standard</b>	<b>Year</b>	ASTM E1300	2009	TAS 201	1994	TAS 202	1994	TAS 203	1994
<b>Standard</b>	<b>Year</b>										
ASTM E1300	2009										
TAS 201	1994										
TAS 202	1994										
TAS 203	1994										
Equivalence of Product Standards Certified By											
Sections from the Code											

Product Approval Method

Method 1 Option D

Date Submitted

08/01/2023

Date Validated

08/07/2023

Date Pending FBC Approval

08/09/2023

Date Approved

10/18/2023

**Summary of Products**

FL #	Model, Number or Name	Description
41821.1	Impact Resistant SCI-H500	Skylight system made of laminated or laminated insulated glass supported by aluminum framing welded or mechanically connected covering different shape configurations.
<b>Limits of Use</b> <b>Approved for use in HVHZ:</b> Yes <b>Approved for use outside HVHZ:</b> Yes <b>Impact Resistant:</b> Yes <b>Design Pressure:</b> +75/-100 <b>Other:</b> Large and Small Missile Impact Resistant. See Item 7 of Product Evaluation Report for limitations and conditions of use.		<b>Installation Instructions</b> <a href="#">FL41821_R1_II_PED Drwg_23-097 SKYLIGHT CONCEPTS INC .pdf</a> Verified By: Walter A. Tillit, Jr. PE 44167 Created by Independent Third Party: Yes <b>Evaluation Reports</b> <a href="#">FL41821_R1_AE_PER Drwg_23-097 SKYLIGHT CONCEPTS INC .pdf</a> Created by Independent Third Party: Yes

[Back](#)

[Next](#)

Contact Us :: [2601 Blair Stone Road, Tallahassee FL 32399](#) Phone: 850-487-1824

The State of Florida is an AA/EEO employer. [Copyright 2007-2013 State of Florida.](#) :: [Privacy Statement](#) :: [Accessibility Statement](#) :: [Refund Statement](#)

Under Florida law, email addresses are public records. If you do not want your e-mail address released in response to a public-records request, do not send electronic mail to this entity. Instead, contact the office by phone or by traditional mail. If you have any questions, please contact 850.487.1395. \*Pursuant to Section 455.275(1), Florida Statutes, effective October 1, 2012, licensees licensed under Chapter 455, F.S. must provide the Department with an email address if they have one. The emails provided may be used for official communication with the licensee. However email addresses are public record. If you do not wish to supply a personal address, please provide the Department with an email address which can be made available to the public. To determine if you are a licensee under Chapter 455, F.S., please click [here](#).

**Product Approval Accepts:**

