

3/4" X 1" X 1" ACRYLIC BLOCK
ADHERED TO OUTER DOME (2) PER DOME

ALUMINUM RETAINING FRAME

"T" GASKET

OUTER DOME

INNER DOME

COPPER
CRIMP SLEEVE

ALUMINUM SILL

#10 S.S. SHEET METAL SCREWS

8d STAINLESS STEEL
OR GALVANIZED NAILS
BY INSTALLER

ROOF FLASHING
BY OTHERS

.060 DIA. BRAIDED
STAINLESS STEEL CABLE
(2) PER DOME

CURB CONSTRUCTION
BY OTHERS

1 1/2"

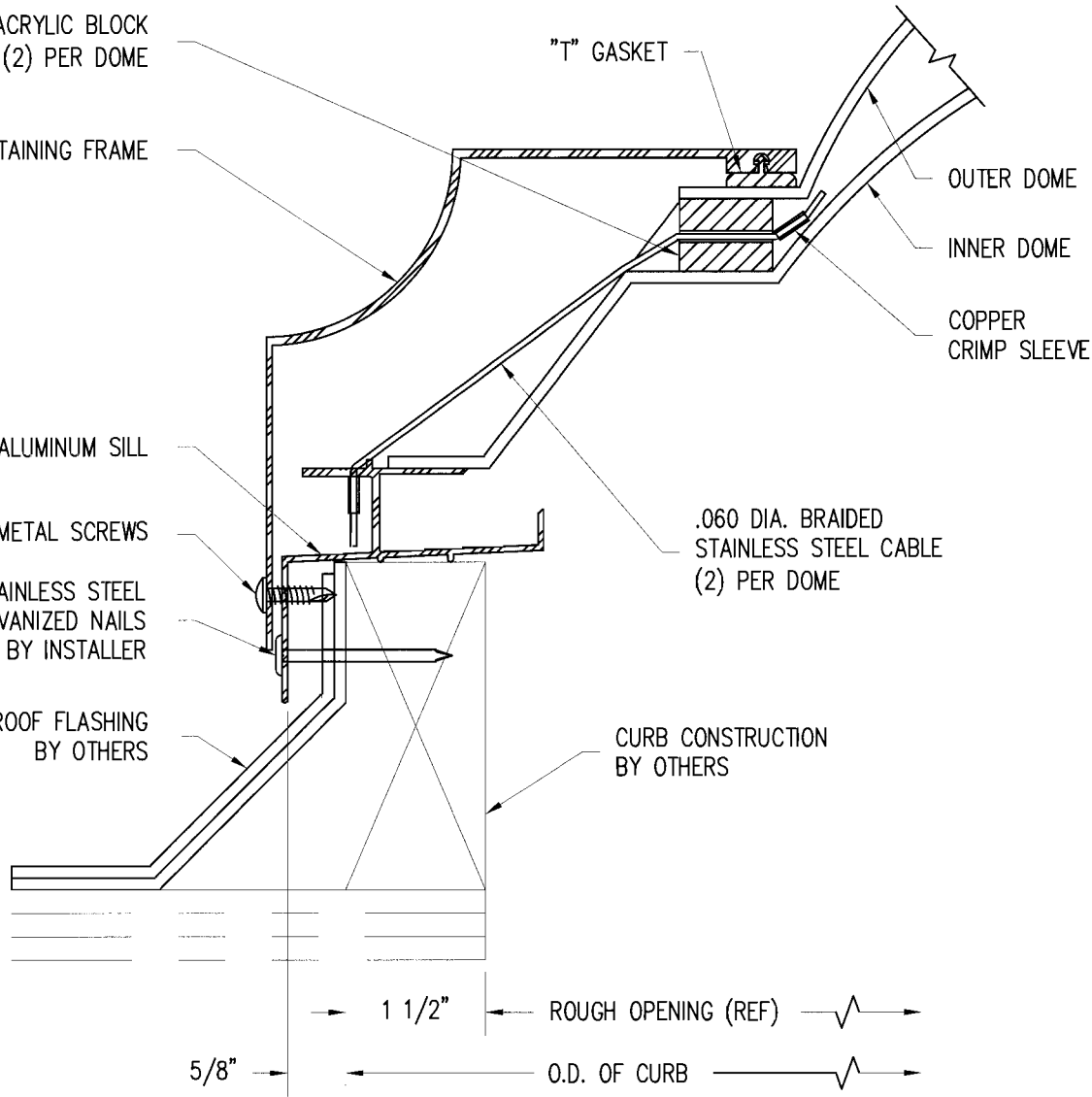
ROUGH OPENING (REF)

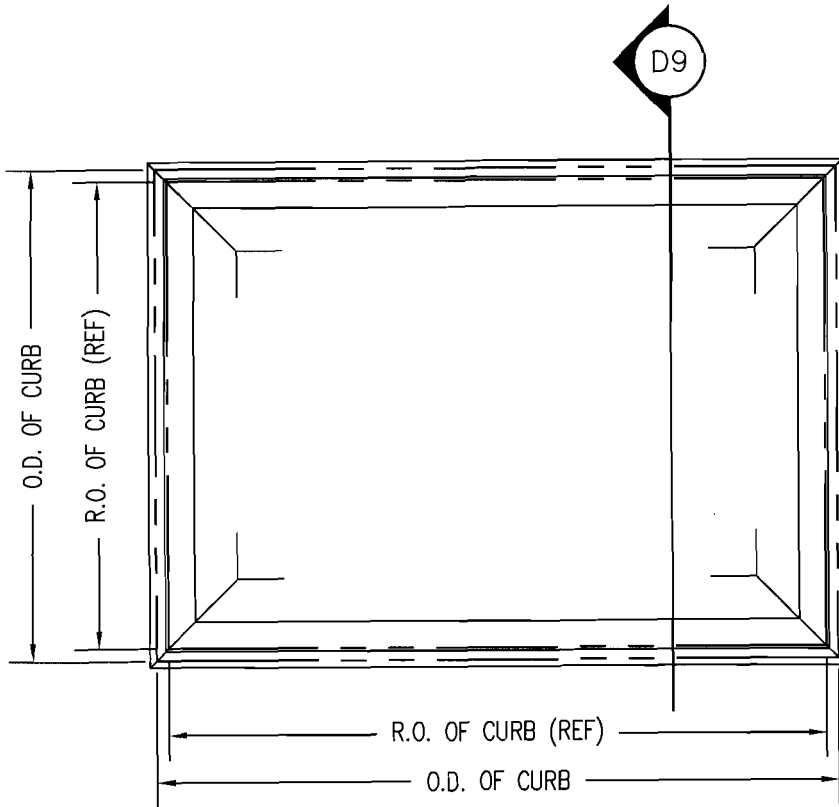
5/8"

O.D. OF CURB

UNIT IS NOT FM APPROVED UNLESS
INSTALLED ON AN FM APPROVED CURB

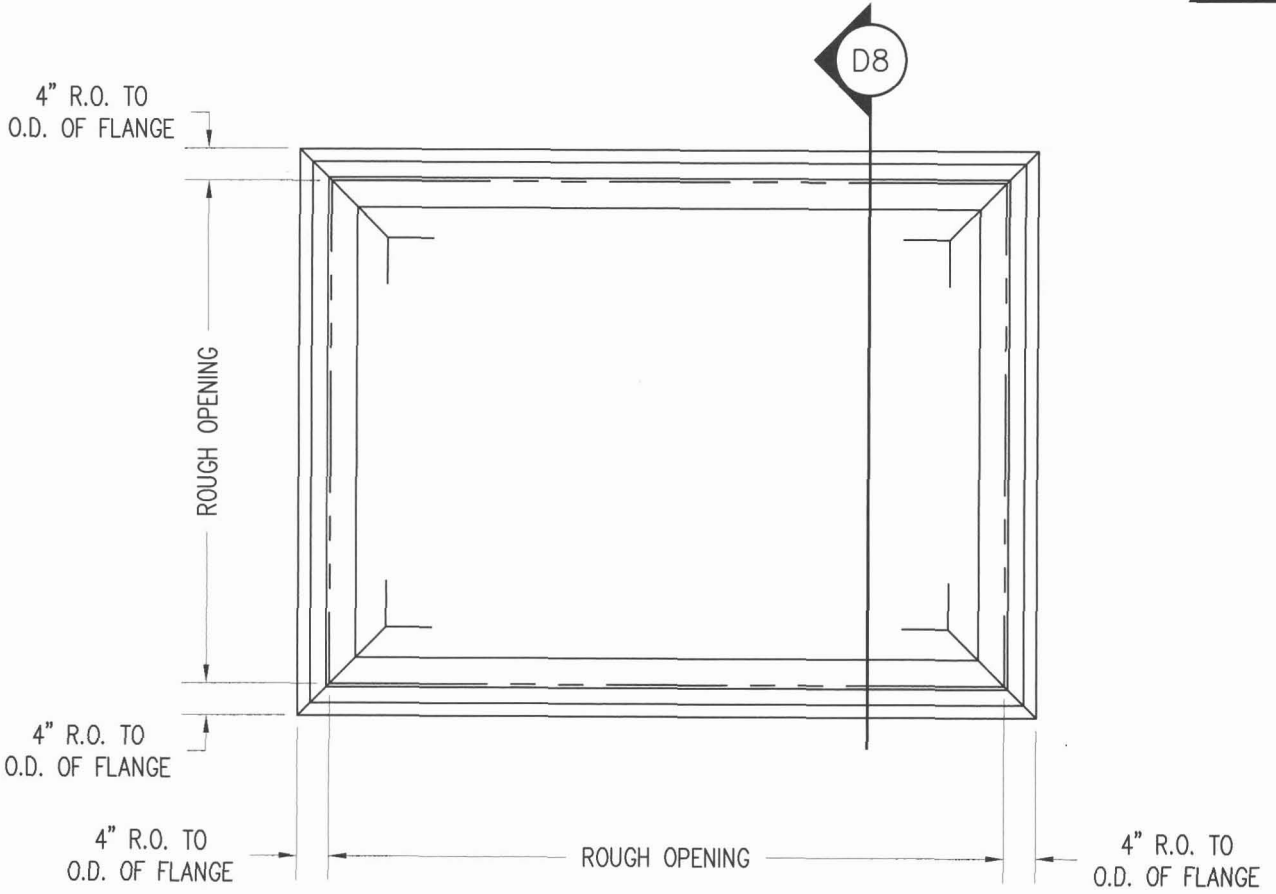
S.S. FASTENERS WILL BE
REQUIRED IF PENETRATING
PRESSURE TREATED WOOD





MODEL	O.D. OF CURB	R.O. OF CURB (REF)
5555	51" X 51"	48" X 48"
5566	51" X 63"	48" X 60"
5578	51" X 75"	48" X 72"
5596	51" X 93"	48" X 90"
55102	51" X 99"	48" X 96"

UNIT IS NOT FM APPROVED UNLESS
 INSTALLED ON AN FM APPROVED CURB



MODEL	R.O. OF CURB
5555	48" X 48"
5566	48" X 60"
5578	48" X 72"
5596	48" X 90"
55102	48" X 96"

3/4" X 1" X 1" ACRYLIC BLOCK
ADHERED TO OUTER DOME (2) PER DOME

ALUMINUM RETAINING FRAME

"T" GASKET

OUTER DOME

INNER DOME

COPPER
CRIMP SLEEVE

ALUMINUM SILL

#10 S.S. SHEET METAL SCREWS

.060 DIA. BRAIDED
STAINLESS STEEL CABLE
(2) PER DOME

1" FIBERGLASS INSULATION
(INDUSTRY STANDARD)

ROOF FLASHING
(BY OTHERS)

CORROSION RESISTANT NAILS
AT 6" O.C. (BY INSTALLER)

CONTINUOUS MASTIC
COMPATIBLE WITH ROOFING
MATERIAL (BY INSTALLER)

